

JK-8009HF

产品使用说明书&产品零件图册

Manual book & parts book

**JACK 杰克**

### 工业缝纫机安全使用注意事项：

1. 必须遵守基本措施；
2. 必须经过专业培训，对缝纫机设备性能、
3. 使用前应检查所有安全装置；
4. 在安装机针、更换机针、压脚、针板、送布牙、弯针、旋梭或修理时，应立即关闭电源；
5. 离开缝纫机或工作场所时应关闭电源；
6. 使用离合马达时，要等待马达完全停止后再进行；
7. 缝纫机及附属装置使用的机油，润滑油等液体流入眼睛或沾到皮肤上应立即清洗；
8. 禁止用手触摸缝纫机通电时的零件或装置；
9. 有关工业用平缝机与包缝机的修理、改造、主要机构的调整由专门技术人员来进行；
10. 一般的维修保养由专人进行；
11. 在电气方面的修理应在电气技术员的监督和指导下进行；
12. 缝纫机使用期间应定期清扫；
13. 为了正常安全运转，应安装地线，同时应在不受高频焊接机等强噪声源影响的环境下使用；
14. 电源插头应由专人安装；
15. 工业用平缝机、包缝机在指定用途以外不能使用。

### 环保要求：

1. 使用过程中产生的废油及其他废弃物请根据当地环保的要求进行合理的处置。
2. 请在使用完后及时关闭电源，减少电能的消耗。
3. 请在说明书要求的电压及环境下使用，已延长产品的使用寿命，减少废弃物的产生。
4. 机器报废后请勿将本机器及其附件作为普通的生活垃圾处理。请遵守本设备及其附件处理的本地法令，并支持回收行动。

### Notes for safe use of industrial sewing machines：

1. Basic measures must be observed.
2. Pass the specialized training and master sewing machine equipment performance.
3. All safety devices should be checked before use.
4. When installing needle, and changing needle, presser foot, plate, feed dog, bent needle, hook or repairing, the power supply should be turned off immediately.
5. Power should be turned off when leaving the sewing machine or workplace.
6. When using the clutch motor, please wait until the motor stops completely.
7. The machine oil and other liquids used in sewing machines and ancillary devices should be cleaned immediately when they are put into eyes or touch skin.
8. Do not touch the parts or devices when the machine is powered by hand.
9. The repair, renovation and adjustment of the main mechanisms of the relevant industrial sewing machines and overseers shall be carried out by specialized technicians.
10. General maintenance is carried out by specially-assigned persons.
11. Electrical repairs should be performed under the supervision and direction of the electrical technician.
12. The machine should be cleaned regularly during operation.
13. In order to operate normally and safely, ground lines should be installed, and they should be used in an environment free from strong noise sources such as high frequency welding machine.
14. Power plug should be installed by specially-assigned person.
15. Industrial lockstitch sewing machine and overlock sewing machine can not be used except the designated use.

### Environmental requirements：

1. Please dispose the waste oil and other waste products properly according to local environmental protection requirements.
2. Please turn off the power after use to reduce power consumption.
3. Please use under the voltage and environment required in the manual to extend the service life of the product and reduce waste generation.
4. Do not treat the machine and its accessories as ordinary household garbage after being scrapped. Please comply with local laws governing the disposal of the equipment and its accessories and support recycling operations.

# 目 录

## CONTENTS

8009-HF 使用说明/Use Manual	1
一、机壳部件/Frane assemblies	4
二、盖板部件/Cloth plate assemblies	6
三、送料部件/Feed assemblies	8
四、主轴部件/Crankshaft drive assemblies	10
五、前主轴部件/Shaft assemblies	12
六、弯针轴部件/Looper shaft assemblies	14
七、下弯针部件/Low looper assemblies	16
八、针杆部件/Needle bar assemblies	18
九、压脚部件/Presser foot assemblies	20
十、夹线器部件/ Tension spring assemblies	22
十一、油泵部件/ Lubrication assemblies	24
十二、传送部件/ Transmission assemblies	26
十三、后凸轮架部件/ After cam Fight assemblies	28
十四、后凸轮部件(1)/ After cam assemblies	30
十五、附件部件(1)/Accessories assemblies(1)	32
十六、附件部件(2)/Accessories assemblies(2)	34
十七、附件部件(3)/Accessories assemblies(3)	36

## ⚠️ 为了安全

对于缝纫机本身各种装置，我们充分考虑到它的安全性。请遵照基本的操作方法，安全的进行工作。

●拆除为保证安全所设置的装置，零件的情况下使用，是非常危险的，请绝对不要拆除后使用。

●缝纫机在使用时，请不要在缝纫机台板上放置工具及缝纫时不必要的物品。

●在对缝纫机进行检修、调节、清扫、穿线、换针等工作时，为防止发生事故，务必请切断电源，在确认即使踩下缝纫机踏板，缝纫机也不转动之后，再进行操作。

## ⚠️ OBSERVE THESE SAFETY PRECAUTIONS

Though Our takes the utmost care to produce safe sewing machines and devices, operators should follow these basic safety rules.

●To prevent accidents, do not remove safety devices or parts while operating the machine.

●Do not leave tools or other unnecessary objects on the machine table while operating the machine.

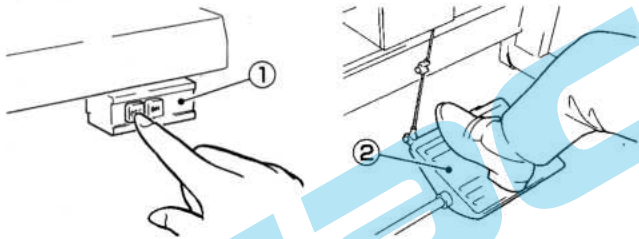
●Before maintenance, adjusting, cleaning, threading or replacing the needle, and to prevent accidents, be sure the power is turned off. Check that the machine will not operate when the pedal is pressed.

## 注意

使用离合式马达的情况下，在关掉电源①后因惯性作用会继续旋转。这时如不注意踩动缝纫机踏板②时，缝纫机会突然动作，这是很危险的。请在关掉电源后，仍继续踩动踏板②，直至缝纫机完全停下来为止。

## Note

In case a clutch type motor is used, it will keep on rotating by inertia after turning off power supply. ①If the machine pedal ②is stepped on inadvertently, it is dangerous because the machine will move unexpectedly. keep on stepping on the pedal ② until the machine comes to a stop after turning off power supply.



●在离开缝纫机台时，务必请关掉电源。

●停电时也请务必关掉电源。

●为了总是安全地，运转良好的使用缝纫机，日常的点检是不可缺少的，请予以注意。

●Turn the power off before leaving the machine table.

●In the event of a power failure, be sure to turn the machine off.

●Check that the machine is securely grounded.

## 一、机器如何安装

1、依本机器所付桌板裁制图及零件组合图所列配件，依序安装防震机座及线架（图1&2）

## How to set up a machine

1、With referenceto diagrams for table cutting and mounting partlist, install vibration-reducing base and thread stand in sequence (Fig.1&2)

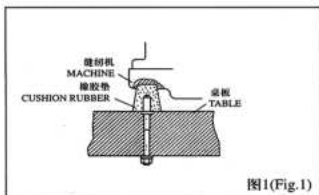


图1(Fig.1)

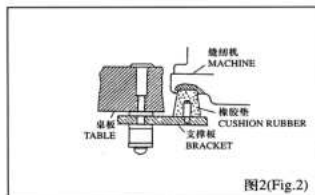


图2(Fig.2)

2、马达转向为顺时针方向，皮带的松紧度以手指向内压下20mm为宜，同时为安全起见，把皮带轮盖必须锁上。（图3&4）

2、Mount the machine head over the rest board Connect the machine hand wheel to the clutch motor with the V-belt. Adjust the tension of the V-belt so that it can be about 20 mm bent inward when you presse the center of V-belt and make sure the clutch motor turning direction is clockwise as shown Figure 3. Install the belt cover according to Figure 4.

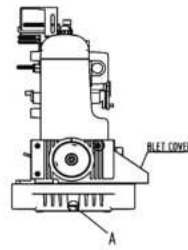


图3 (Fig.3)

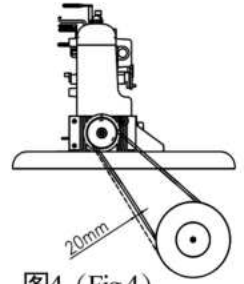


图4 (Fig.4)

3、皮带轮及缝纫转速，请参照（表2）

3、Motor pulley size and sewing speed, please refer to table No2

表1 (Table.1)

Machine Speed (s.p.m.) 转速/分	Motor Pulley Outer Diameter (mm)	
	60Hz	50Hz
4,500	90	105
4,000	80	95
3,500	70	85

## 注意:

1、使用新机器最初一个月转速约为最高转速（表1）的80%，并请选择正确的马达皮带轮尺寸（表1）。

2、桌板厚度为40mm。

3、马达规格：离合器马达，3相2级400W（1/2HP）。

## Note:

1、New machine run a speed approximately 80% of the Maximum speed in the first month (table.1). Be sure to choose proper motor pulley for your machine.

2、Table top is 40mm thick.

3、Specification of motor: clutch motor 3, phase, 2 poles, 400W (1/2HP)

## 二、润滑油的注入与更换

新机器运装前均已将油倒尽

(1) 润滑油的注入(图5&6)

●将螺丝A旋开，以包装箱内所附的超高速润滑油或选用MOBIL#10或AGIP等相当的机油加入，使油面处于油标两刻度线之间为好，然后再锁紧螺丝A；

●开箱新机器或久置未使用重新要用时，请在针棒、上勾针台、后拖轮传送轴等处加油润滑（图6-1、6-2、6-3）。

(2) 润滑油的更换(图3)

●将螺丝A放松旋开，使油完全排出后再锁紧；

●为延长本机器的寿命，请于开始使用四个星期更换新油后，约四个月更换一次。

(3) 滤油器的更换(图7)

●本机器特别装有滤油器，约每使用一个月后卸下清洗，必要时更换新品。

## Lubricant oil filling and change

New machines are shipped out with empty chambers. please fill lubricant oil into new machines before run them.

1. Filling lubricant oil : (Fig.5&6)

● Loosen Knob (A) fill in with accompanied super-high-speed lubricant oil its equivalent such as Mobil#10 or #32, until the oil up be-fween two marks on Inscicator (C)

2. Lubricant oil change : (Fig.3)

● Loosen Knob (A) drain oil from the tank, then tight it up.

● In order to p ro-long machine life, please change lubricant oil after 4 week of operation. There after, change oil every 4 months.

3. Replacing oil filter: (Fig.7)

● Our machines are equipped with oil filters. Take our the filters and clean them up every month. Replace with new filters if necessary.

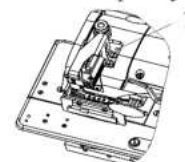


图6-1 (Fig.6-1)

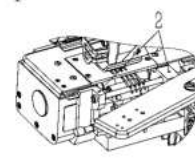


图6-2 (Fig.6-2)

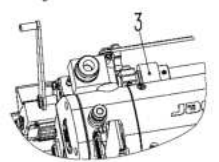


图6-1 (Fig.6-1)

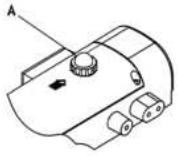


图5 (Fig. 5)



图6 (Fig. 6)

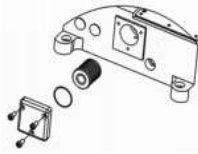


图7 (Fig. 7)

### 三、针的更换

选用针的规格与尺寸请参照(表2)

For specification and sizes of needles, please refer to (table.2)

NEEDLE SYSTEM 针规格	NEEDLE SIZE 针番号
SCHMETZ UY113GS	#70 - #160
ORGAN Uo113	#11 - #18

1. 拧下螺钉(A)并取下针。(图8)
2. 将新针插至含针孔最底端,并使针的凹面向自己。
3. 重新锁紧螺钉(A)。
4. 针与勾针有密切的关系。如果机针安装不正确,不但会引起跳针、断针会损伤勾针,务必注意。

#### How to replace needles

1. Loosen screw (A) and take out the used needle. (Fig.8)
2. Put new needle into the holder holes as they can go and left the long groove of needle face you and Fasten Screw (A)
3. Needle and loopers have close interaction. improper needle setting will skipping stitches, breaking Threads, and damaging loopers, please Pay fing attention to needle installation.

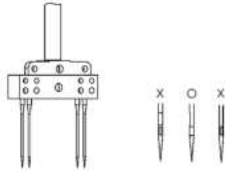


图8 (Fig. 8)

### 四、穿线方法

1. 按照图示穿线, 错误穿线将引起断线、跳针或缝纫线迹不良等现象。图(9)
2. 在穿弯针线时, 打开前盖(A), 旋转手轮, 将针杆转至最高点后, 将弯针架控制按钮(B)沿箭头方向压入, 使弯针架轴与带动连杆分离, 然后将弯针架(C)向前扳出, 即可进行穿线。(图10)

#### Threading

1. Refer to the sewing type you need for correct threading. Any incorrect threading may cause thread brake, uneven stitches or skip stitches. (Fig.9)
2. When threading the looper, first open cover A, rotate the handwheel, when needle bar up the the highest point, press button B, then looper shaft and lever separate. Turn the looper stand C outward, then you can threading.

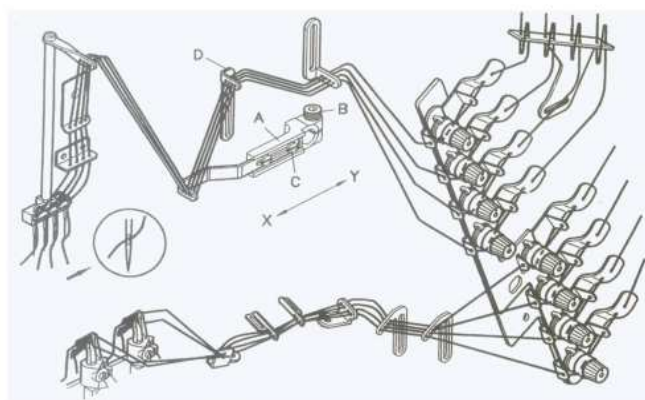


图9 (Fig. 9)

### 五、控线的调整

1. 控线强弱必须根据车缝材料种类, 厚薄以及线与针距等不同来进行调整。将控线钮顺时针旋转时越紧, 反之则越松。

2. 针控线杆的调整(图11)针线控线杆(B)根据缝线的种类来选择使用状态, 放松螺钉(A)将(B)上下移动调整, 在使用伸展性较大的缝线时将(B)上移, 则针孔处的线环就会变大, 利于勾线。

#### Thread tension adjustment

1. Thread tension should be adjusted in regarding to kinds of threads fabrics, thickness of fabrics, and stitch length etc. (Fig.9)
- Turn thread knob clockwise for tighter tension and vice versa (Fig.11)

2. Adjustment (Fig.12) The position for Needle thread Take-up Lever (B) is adjustable according to thread used. Loosen screw (A), move lever (B) up and down for the optimum position. For instance, when using high extension thread, move lever (B) upward to make a bigger needle thread loop for lower to chain easily.

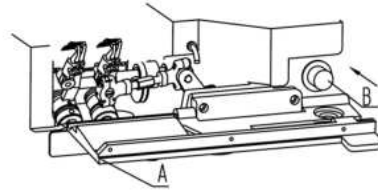


图10 (Fig. 10)

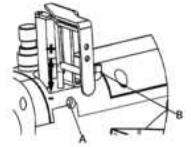


图11 (Fig. 11)

### 六、机针高度调整

1. 当针杆上升至最高点时, 调整针尖与针板面的距离为  $10 \pm 0.5\text{mm}$ 。(图13)
2. 打开上方侧盖橡胶塞(A), 并松开螺钉(B), 上下调整机针高度后在固定螺钉。(图14)

注意:  
机针高度调整后, 必须确定每一根针是通过针板孔中央。(图15)

#### Needle position adjustment

1. Needle tip should be  $10 \pm 0.5\text{mm}$  height from Needle plate when Needle Bar mores to its top position. (Fig.13)
2. The position of needle bar can be adjusted by [1] removing rubber cap (A) and loosening nut (B) [2] moving needle bar up and down to proper position and [3] tightening screw (B), and inset in cap (A). (Fig.14)

Note:

Be sure that every needle goes through the center of needle holes on Needle plate. (Fig.15)

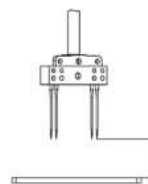


图13 (Fig. 13)

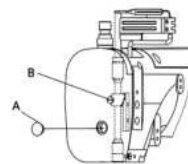


图14 (Fig. 14)

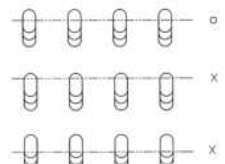


图15 (Fig. 15)

### 七、针距的调整

1. 压下针距调整按钮(A), 并转动手轮, 使按钮卡住针距调整组件, 再转动手轮至所需针距后, 放松此按钮。(图16)

2. 欲增大针距时, 将手轮往顺时针方向旋转, 反之则小, 调整针距时, 马达需在停止状态。

#### Stitch length adjustment

Push stitch length regulator bottom (A) and turn pulley until the bottom lock in the stitch regulator. Then turn pulley again to reach desired stitch length then release the bottom (Fig.16). Turn pulley clockwise for longer stitch length, vice ver'sa. Be sure to turn off motor when adjusting.

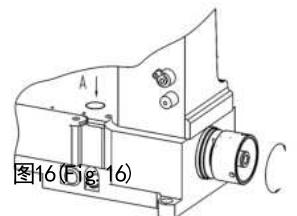


图16 (Fig. 16)

## 八、后拖轮的调整

当针杆由下极限位置往上移24mm, 后拉引轮开始转动, 即为正确的位置关系。

调整: (图17)

1. 拧松偏心凸轮(B)固定螺钉(A)后, 再稍微锁紧。
2. 旋转手轮至上述条件后, 再锁紧螺钉(A), 往前转则变快, 往后则变慢。

### Rear puller adjustment

When needle bar moves upward from its dead bottom end about 24mm, the rear pulley can starts moving .

To adjust:(Fig.17)

1. Loosen screws (A) on eccentric cam (B) then tighten a little bit.
2. Turn pulley to have Needle Bar and rear puller reach their proper timerelated position. Then tighten screw (A). Turn eccentric cam forward to have faster motion. Vice ver'sa

## 九、后拉引滚轮供给量的调整

1. 取下上盖, 拧松连杆(A)上的螺帽(B)。 (图18)
2. 将连杆(A)前后移动, 往前移动(C方向)则供给量小, 往后移(D方向)则供给量大。
3. 微调时, 放松螺帽(A)将连杆(B)上下移动, 往上量多。(图19)

### Feeding adjustment of rear pulley

1. Take off cover and Release nut (B) on connector (A). (Fig. 18)
2. Move connector (A) back and forth for more or less feeding length ,toward (C) direction reduce feeding length.
3. For micro adjustment ,release nut (A) and move connector (B) upward for longer and downward for shorter feeding length respectively . (Fig. 19)

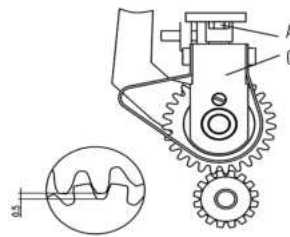


图20 (Fig.20)

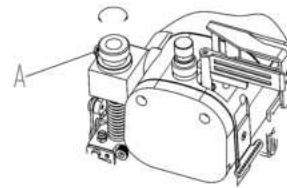


图22 (Fig.22)

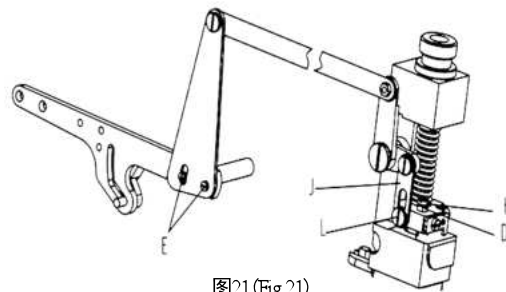


图21 (Fig.21)

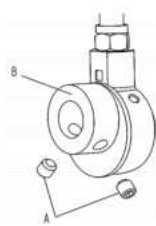


图17 (Fig.17)

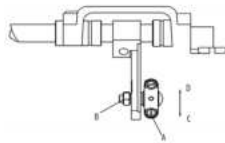


图18 (Fig.18)

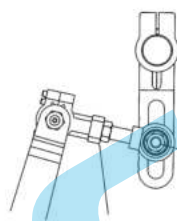


图19 (Fig.19)

## 十、上下滚轮间隙的调整

上下滚轮的间隙: 将下滚轮放至下死点在自由状态时, 上滚轮与下滚轮的齿间隙为0.5mm(图20), 且两滚轮平行。调整:

1. 两滚轮平行调整: 将螺钉(A)放松, 调整两滚轮平行后, 稍紧螺钉(A)上下移动固定座(C), 使上下滑动顺畅, 再锁紧螺钉(A)。 (图20)
2. 间隙0.5mm的调整: 如图(图21)所示, 调整螺钉(H), 使上下滚轮的间隙为0.5mm再锁紧螺帽(D) (图21)稍放松螺钉(K)并调整连杆(J), 使螺钉(L)与连杆(J)的长圆孔下方的间隙为0.5mm, 再锁紧螺钉(K)。
3. 上滚轮压力的调整: 将压力调整螺钉(A)往顺时针方向转动, 则压力加大, 反之压力减小。(图22)

### Gap adjustment of top and lower rollers

The feeth gap between top and lower rollers should be 0.5mm (Fig.20), when the lower roller is free and at its dead bottom end and parallel to the top roller.

To adjust:

#### 1. Paralleling adjustment :

Paralleling Loosen screw (A) and top and lower rollers parallel. Tighten screw (A) slightly and move frame Base (C) up and down to its smooth. The tighten screw (A). (Fig.20)

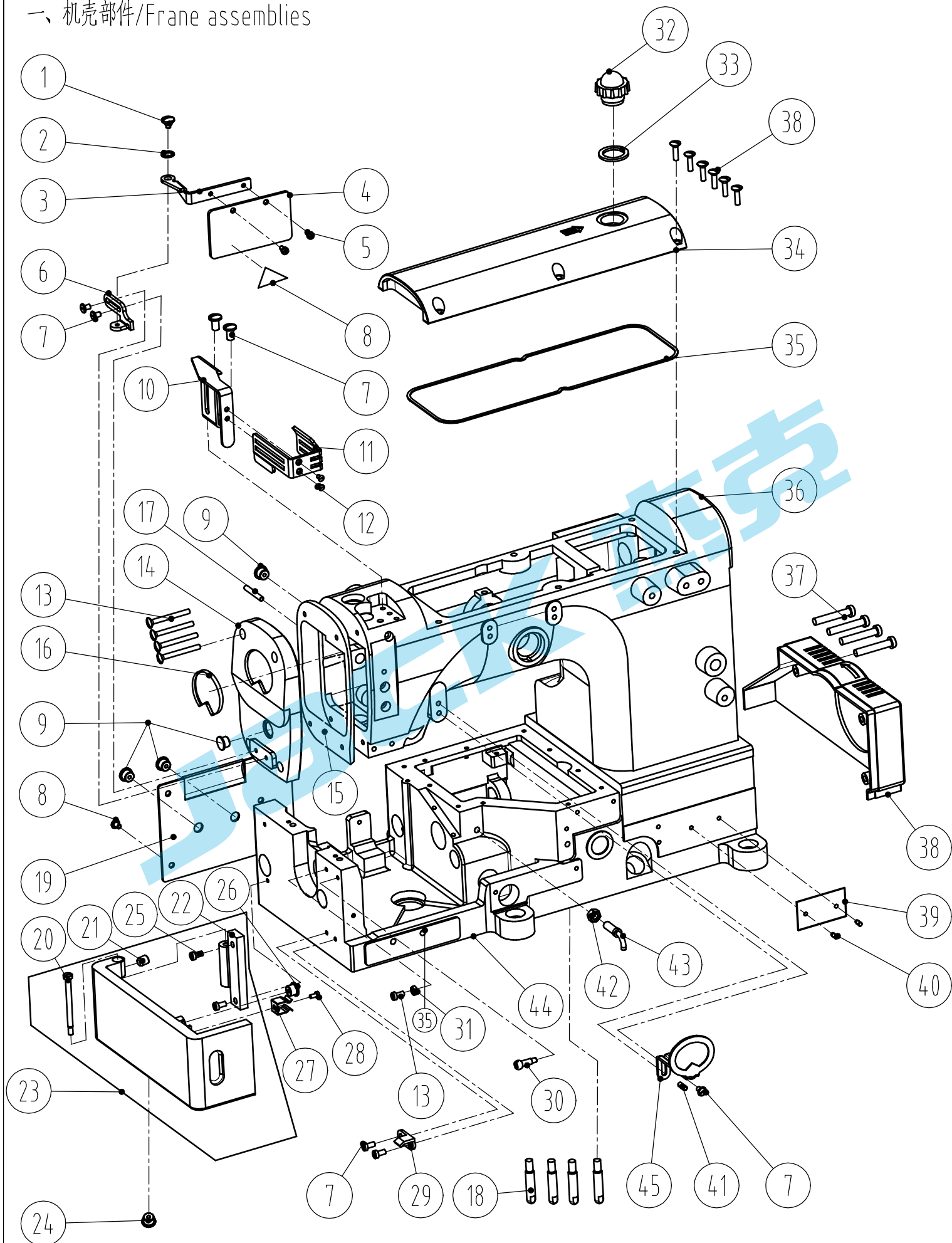
#### 2. Gap referring (Fig.21):

Loosen nut (D) and turn screw (H) to reach 0.5mm gap between top and lower rollers. Then tighten screw nut (D). (Fig.21) release screws (K) slightly and adjust connector (J) to keep the space between the bottom edge of screw (L) and the edge of slot on connector (J) at 0.5mm. Then tighten screw (K).

#### 3. Pressure adjust:

Turn pressure control knob (A) clockwise to increase the pressure of top roller, vice ver'sa (Fig.22) .

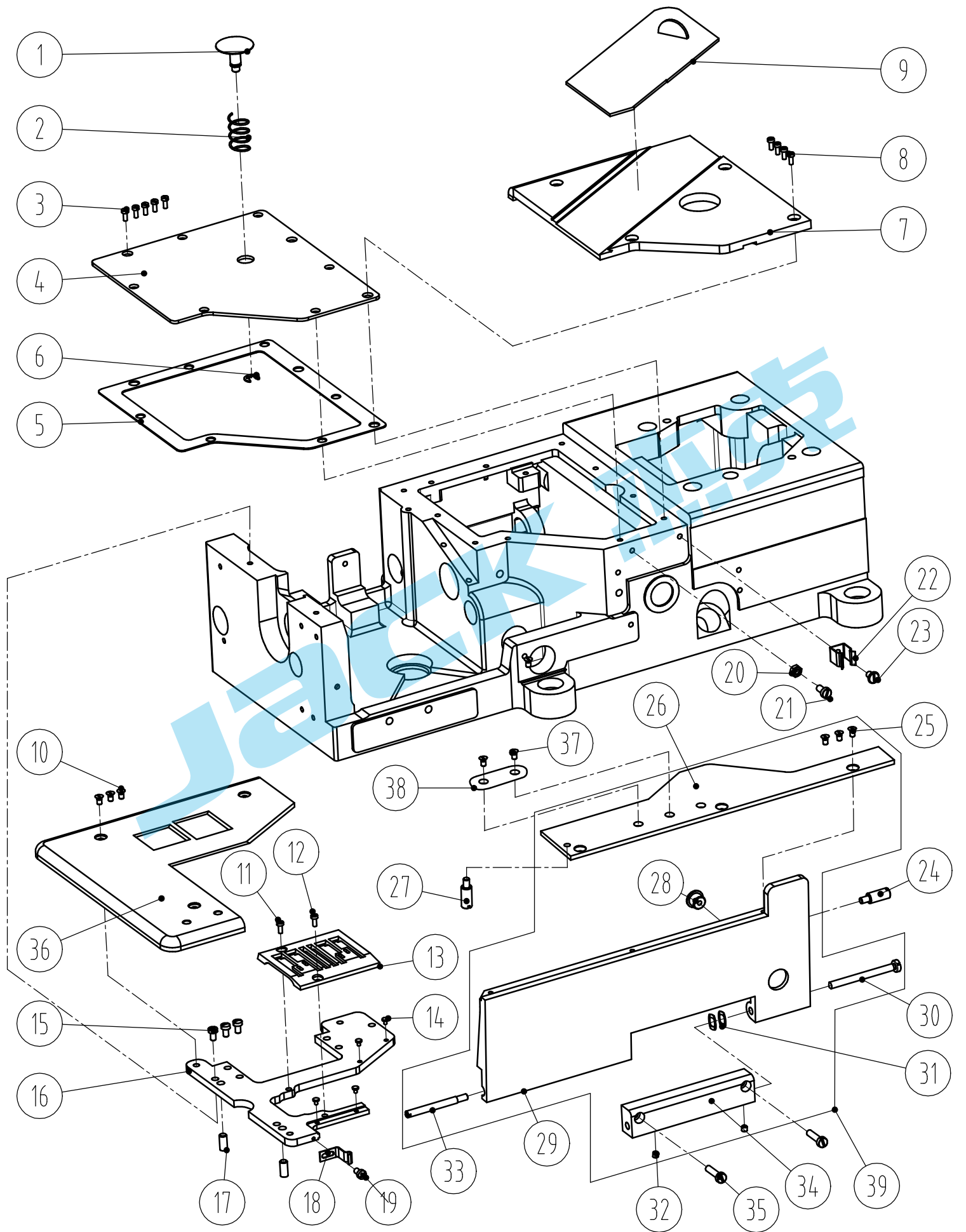
一、机壳部件/Frame assemblies



## 一、机壳部件/Frane assemblies

序号 No	件号 Par No.	参考件号 Ref.Part.No	名称	Description	数量 Number	备注 Remark
1	305S20001	SM49E	螺钉	Screw	1	
2	30528001	KP60	波形垫片	Washer	1	
3	30512001	MA80	断针防护罩架	Eye Guide assy.	1	
4	30511001	MA83	断针防护罩	Eye Guide assy.	1	
5	S04016	SM132	螺钉M3.5×6	Screw	2	
6	30512002	MA79	断针防护罩架座	Holder	1	
7	113S11004	SM438	螺钉M4×8	Screw	6	
8	20131063	MA84	警告牌	Brand	1	
9	30522001	KH48	橡皮塞	Plug	5	
10	300215	VA19P	针杆护罩(喷漆)	Needle Bar Eye Guide	1	30512003
11	300216	MA82	防护罩(喷漆)	Eye Guide	1	30512004
12	201S17003	SM152	螺钉M3×2	Screw	2	
13	S01057	SM44B	螺钉M4×15	Screw	5	
14	300217	VA05	机头左盖	Left Cover	1	30501047
15	30501049	VA04	机头左盖密封垫	Sticker	1	
16	30337001	MA06E	商标	Brand	1	
17	30526001	PM404	抬压复位拉簧销	Pin	1	
18	305S20003	SM670	螺钉	Screw	4	
19	300596	HA06	挡板(喷漆)	Plate	1	30612001
20	306S20001	SM44C	螺钉	Screw	1	
21	305S14001	SM401	螺钉	Screw	1	
22	30601001	HA02	固定座	Root Seat	1	
23	300593	HA03	下侧盖组件	Lower Cover assy	1	
24	30622001	KB05	橡皮塞	Plug	1	
25	207s11008	SM438	螺钉M4×12	Screw	2	
26	30622001	KB05	橡皮塞	Plug	1	
27	30612002	MA19	卡扣	Screw	1	
28	S01027	SM132	螺钉M3×6	Screw	1	
29	30612003	HA04	卡扣	Ka Ko	1	
30	306S30001	SM488	球头螺钉	Screw	1	
31	N01001	NM410	螺母M4	Nut	1	
32	20111005	KC57	油窗盖	Oil Sight Window	1	
33	20122018	KC58	油封	Oil Seal	1	
34	301812	VA02	上盖	Top Cover	1	30501048
35	30522024	VA03	油封	Oil Seal	1	
36	30501004	VA08	机头上节	Upper Machine	1	
37	305S20002	SM417	螺钉	Screw	3	
38	30511002	VA23	带轮盖	Belt Cover Assy.	1	
39	30537003	VA26	商标	Brand	1	
40	R03001	KA33	铆钉2.5*4	Screw	2	
41	P03025	PM413	定位销φ4×12	Pin	1	
42	306S16001	NK46	螺母M6	Nut	1	
43	30636001	HA16	油嘴	Tube	1	
44	30601003	HA01	机壳下节	Lower Machine	1	
45	30512081	VA06	挑线过线板防护罩	Eye Guide Plate	1	

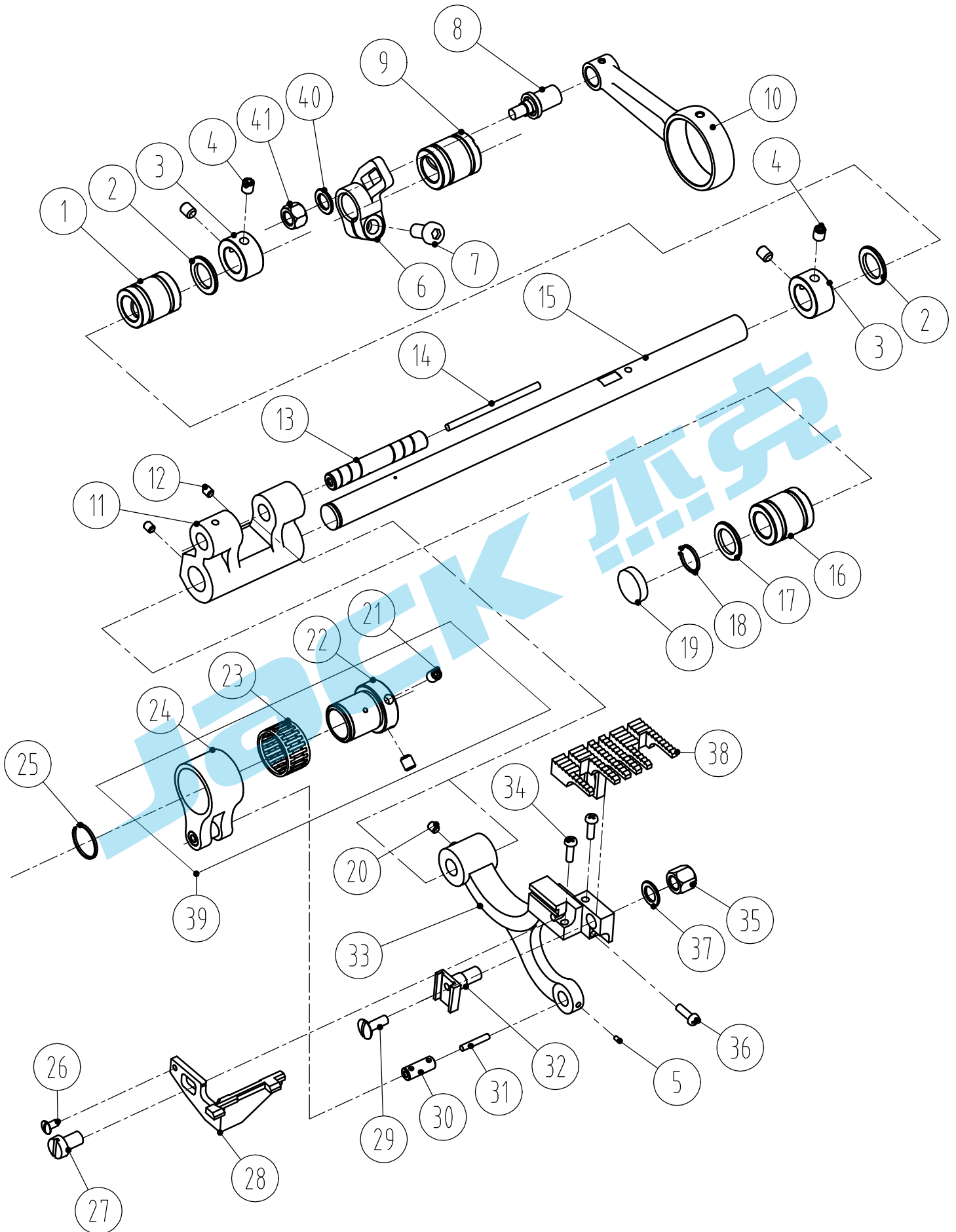
## 二、盖板部件/Frame assemblies



## 二、盖板部件/Frane assemblies

序号 No	件号 Par No.	参考件号 Ref.Part.No	名称	Description	数量 Number	备注 Remark
1	30502001	VB04	针距调节按钮	Button	1	
2	30527001	VB03	调节弹簧	Spring	1	
3	301S11024	SM433	螺钉M4×8	Screw	5	
4	3061200400	HA14	盖板组件	Cover Assembly	1	
5	30622002	HA13	纸垫	Washer	1	
6	H05003	EM050	挡圈5	Coller	1	
7	300592	HA12	盖板	Cover	1	30612006
8	207S11008	SM438	螺钉M4×12	Screw	4	
9	30612007	HA11	推板	Cover	1	
10	S03002	SM460	螺钉M4×3.5	Screw	3	
11	305S30004	SM162	开槽半沉头螺钉	Screw	1	
12	305S17001	SM160	螺钉	Screw	1	
13	30615001	E8×××	针板	Needle Plate	1	
14	30622003	KH77	减震橡皮垫	Washer	4	
15	S01038	HA14	螺钉	Cover	1	
16	30612008	HA07	针板垫块	Bracket	1	
17	P01006	PM502	销5×10	Pin	2	
18	30612009	MA47	前盖板卡扣	Screw	1	
19	306S11004	SM031	螺钉	Screw	1	
20	N01001	NM410	螺母M4	Nut	1	
21	S01010	SM438	螺钉M4×8	Screw	3	
22	30612002	MA19	卡扣	Ka Ko	1	
23	S01027	SM132	螺钉M3×6	Screw	1	
24	301S30002	SM473	螺钉	Screw	1	
25	306S20004	SM150	螺钉	Screw	3	
26	30612010	HA08	前盖板(喷漆)	Side Cover	1	
27	306S30003	SM471	螺钉	Screw	1	
28	30622001	KB05	橡皮塞	Plug	1	
29	30601004	HA09	前盖板	Cover	1	
30	306S20005	SM445	螺钉	Screw	1	
31	30528001	KP60	垫片	Washer	1	
32	305S14001	SM404	螺钉	Screw	2	
33	306S30004	SM476	螺钉	Screw	1	
34	30601005	HA05	固定块	slider	1	
35	S01057	SM439	螺钉M4×15	Screw	2	
36	300595	HA10	盖板	Cover	1	30612011
37	S01060	SM630	螺钉M6×10	Screw	2	
38	40128013	WM500	垫圈6.5×13×0.8	Washer	2	
39	300594	-----	前盖板组件		1	3060100800

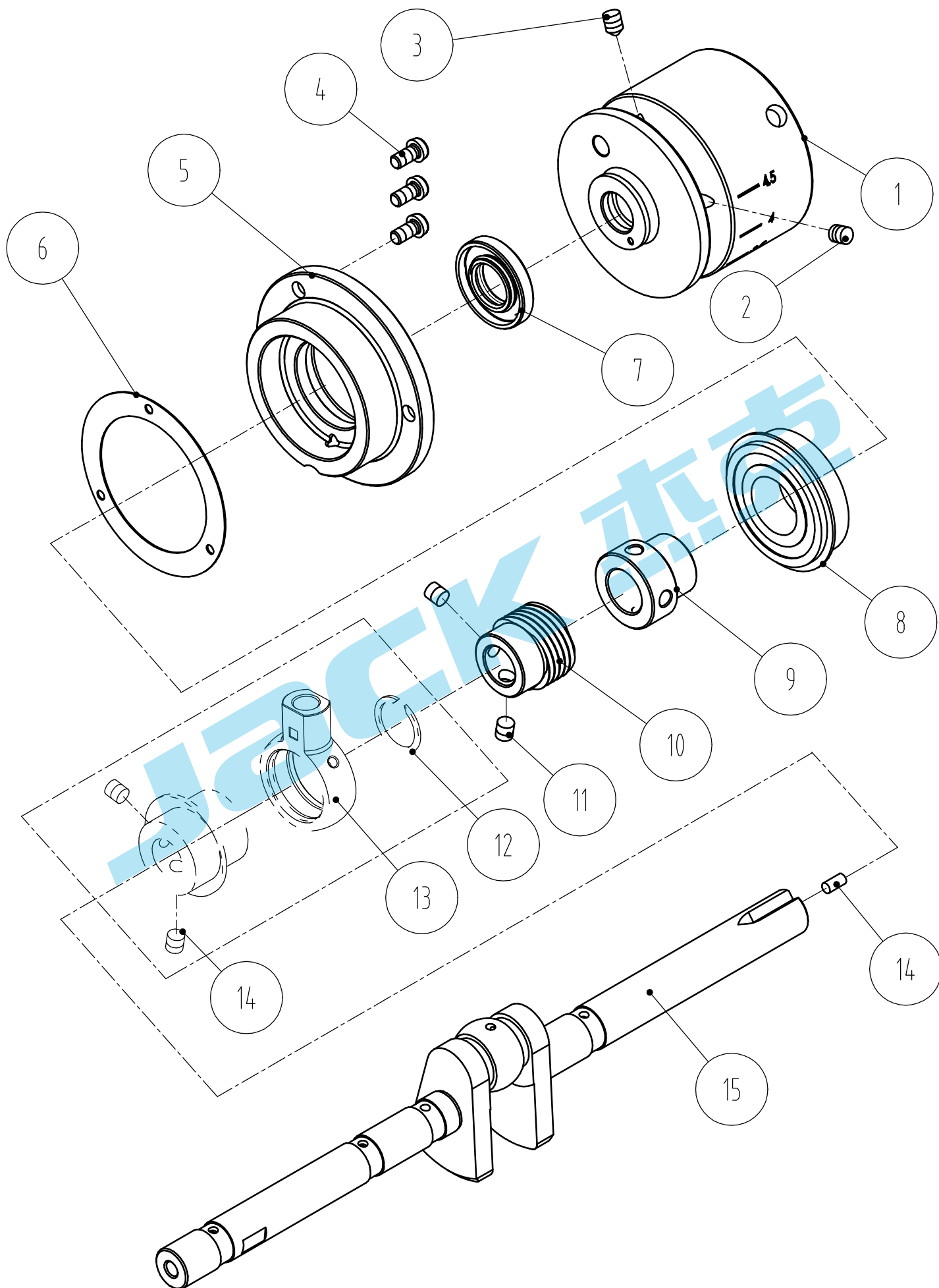
### 三、送料部件/Feed assemblies



### 三、送料部件/Feed assemblies

序号 No	件号 Par No.	参考件号 Ref.Part.No	名称	Description	数量 Number	备注 Remark
1	30503005	VC01	铜套	Bushing	4	
2	20128031	CL13	垫片	Washer	1	
3	30508001	MH73	挡圈	Ring	1	
4	S09008	SM502	螺钉M5×5	Screw	3	
5	305S14003	SM184	螺钉	Screw	1	
6	30604001	MH56E	曲柄	Crank	1	
7	S05002	SM612	螺钉M6×0.75×15.2	Screw	1	
8	30626001	MH60	销子	Pin	1	
9	30503002	VC09	铜套	Bushing	1	
10	30605003	HD05	连杆	Link	1	
11	30604002	HC02	曲柄	Crank	1	
12	305S14007	SM600	螺钉M6×8	Screw	2	
13	30626002	HC05	销子	pin	1	
14	20123021	HC05-1	油线	Oil Wick	1	
15	30602001	HC04	送料轴	Shaft	4	
16	30503005	VC01	铜套	Bushing	1	
17	20128031	KR14	垫片	Washer	1	
18	H04001	EM123	挡圈12	Ring	1	
19	30622007	VC16	油封	Oil Seal	1	
20	201S14002	SM502	螺钉M5×5	Screw	1	
21	201S14002	SK270-2	螺钉	Screw	1	
22	30510001	VC25	偏心凸轮	Eccent	1	
23	30524001	VC24	轴承	Bearing	1	
24	30605001	HE02	连杆	Eccent	1	
25	30508004	VC23	卡簧	Spring	1	
26	S01012	SK219	螺钉	Screw	1	
27	306S11001	SK573	一字螺钉	Screw	2	
28	30617001	HC15	护针	Needle Guard	1	
29	306S10001	SK257	螺钉	Screw	1	
30	30526008	VE02	销子	Pin	4	
31	20123021	VC11	油线	Oil Wick	1	
32	30609003	HC12	牙齿连接槽	Slider	2	
33	400417	HC11	牙架	Feed	1	
34	306S30005	SK571	螺钉	Screw	2	
35	306S16004	NM613	一字六角螺母	Nut	1	
36	306S30006	SK570	螺钉	Screw	1	
37	41228024	WM600	垫片	Washer	1	
38	30614001	.....	牙齿	Feed Dog	1	
39	3060501800	.....	抬牙偏心连杆组件	Felt	1	
40	30128032	CL13	垫圈	Washer	1	
41	N01004	NM613	六角螺母M5	Nut	1	

#### 四、主轴部件/Crankshaft Drive assemblies

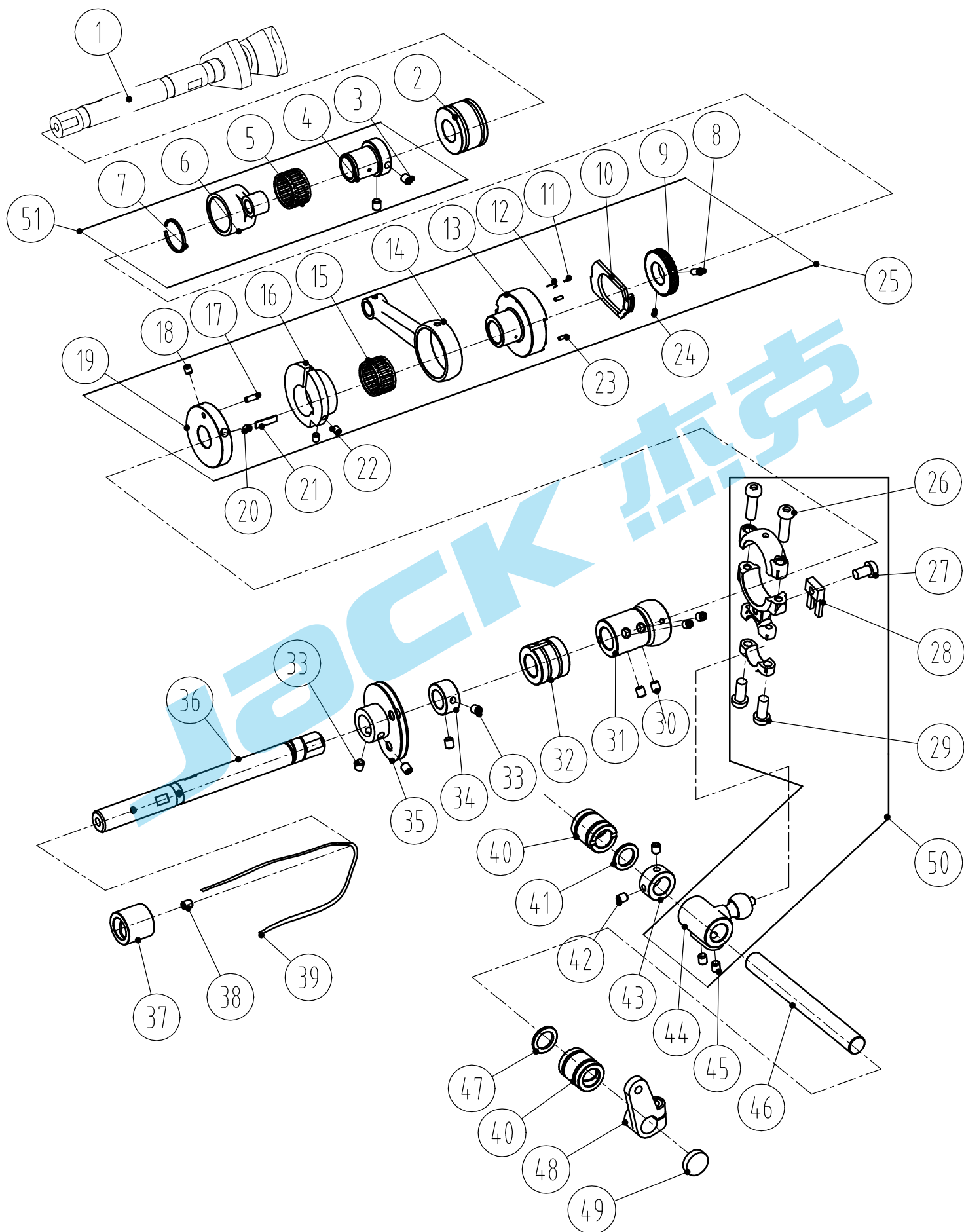


#### 四、主轴部件/Crankshaft Drive assemblies

序号 No	件号 Par No.	参考件号 Ref.Part.No	名称	Description	数量 Number	备注 Remark
1	30535001	VD01	皮带轮 (喷漆)	Machine Pulley	1	
2	S09007		内六角平端紧定螺钉M6×8	Screw	1	
3	S12001	SM604	内六角锥端紧定螺钉M6×8	Screw	1	
4	S01011	SM532	开槽圆柱头螺钉M5×10	Screw	3	
5	130503004	-----	轴承座	Bearing Cover	1	
6	30522008	VD05	后主轴右轴套密封垫	Washer	1	
7	13052200200	-----	油封组件	Oil wick	1	
8	B10002	-----	深沟球轴承 (6004-2RSNR)		1	
9	130503003	-----	后轴轴承套	Bearing Cover	1	
10	30525001	VD04	蜗杆	Worm	1	
11	S10029	SM602	内六角凹端紧定螺钉M6×0.75×5 (进口)	Screw	2	
12	30508009	VCL03	卡簧	Spring	1	
13	30505016	VCL02D	连杆组件	Rod Assembly	1	
14	S09002	SM606	螺钉	Screw	3	
15	30602002	HD13	主轴	Shaft	1	

JACK 杰克

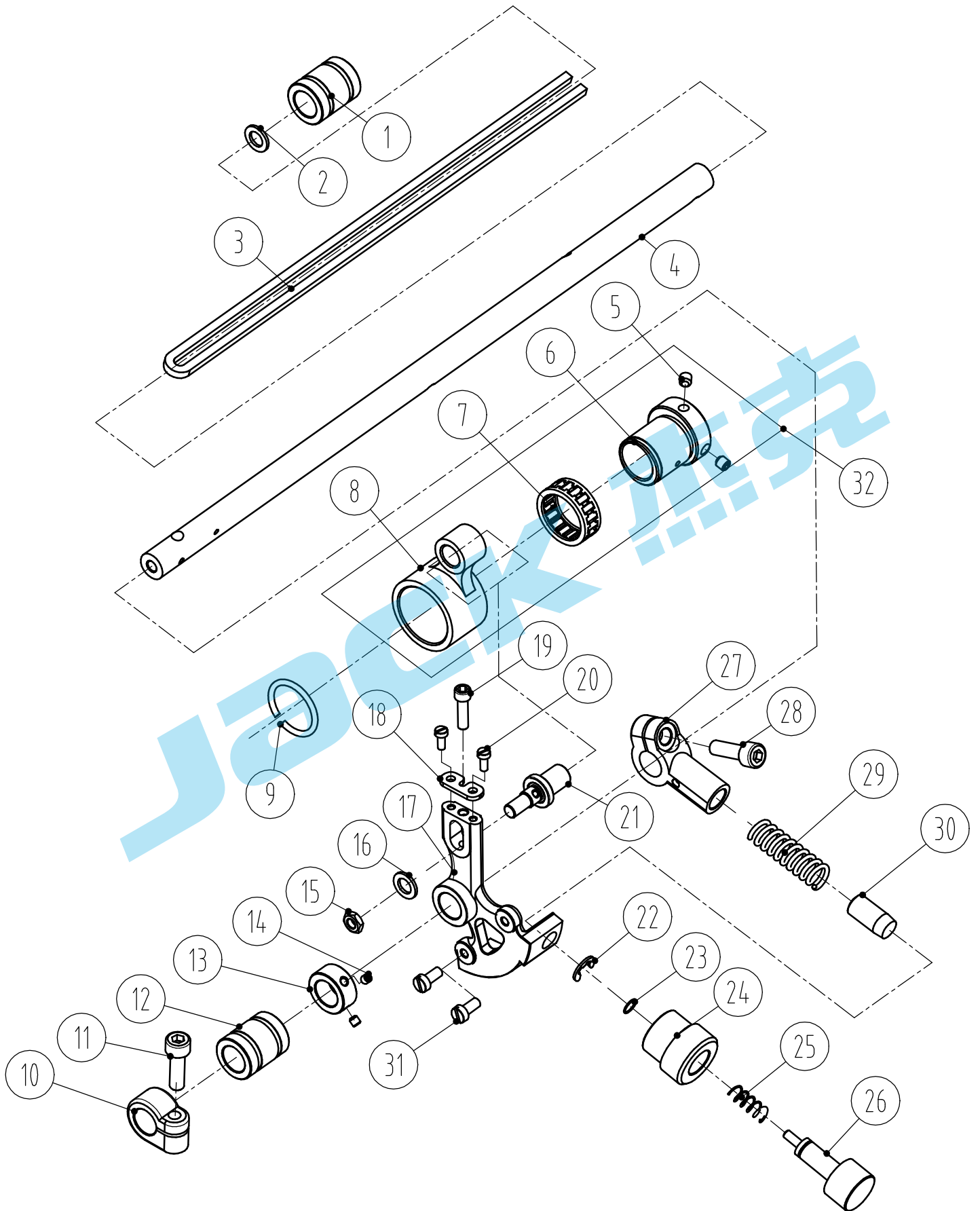
# 五、前主轴部件/Shaft assemblies



## 五、前主轴部件/Shaft assemblies

序号 No	件号 Par No.	参考件号 Ref.Part.No	名称	Description	数量 Number	备注 Remark
1	400048	HD13	主轴	Shaft	1	30601009
2	30603004	HD16	铜套	Bushing	1	
3	201S14002	SK270	螺钉	Screw	2	
4	30510001	VC25	偏心凸轮	Eccent	1	
5	30524001	VC24	轴承	Bushing	1	
6	30605002	HE19	连杆	Link	1	
7	30508004	VC23	卡簧	Spring	1	
8	305S14009	-----	螺钉 SM9/64×40	Screw	1	
9	30525015	VD46	齿轮	Gear Wheel	1	
10	30509020	KP74	针距调节滑块	Ratchet	1	
11	S01024	-----	送布组件弹簧螺钉M3	Screw	1	
12	30527011	-----	送布组件上弹簧	Spring	1	
13	30510018	VD43	针距凸轮	Cam	1	
14	30605003	HD05	连杆	Link	1	
15	30524005	-----	滚针轴承	Bearing	1	
16	30510017	VD44	送布凸轮	Cam	1	
17	30526030	KP18-1	销子	Pin	1	
18	305S11020	SM107	螺钉	Screw	1	
19	30510016	VD47	送布固定轮	Deliver Wheel	1	
20	305S14001	-----	螺钉 SM11/64×40	Screw	2	
21	30508010	-----	送布凸轮簧	Spring	1	
22	401S14004	SK817	螺钉	Screw	2	
23	S07001	-----	螺钉 M3×8.2	Screw	2	
24	305S14010	-----	螺钉 SM9/64×40	Screw	1	
25	3060900500	-----	送布组件	Cam	1	
26	S01011	SK278	螺钉M5×10	Screw	2	
27	306S11005	SK438	螺丝	Screw	1	
28	30609002	VF22E	定位导向叉	Washer	1	
29	305S11006	SK277	螺钉	Screw	2	
30	S09010	SM602	螺钉M6×5	Screw	4	
31	30603005	HD12	曲柄球	Crank	1	
32	30503010	HD17	铜套	Bushing	1	
33	S10014	SM501	螺钉M5×4	Screw	2	
34	30508007	VCL11	挡圈	Ring	1	
35	3061300100	HD07	打线凸轮组件	Cam Assembly	1	
36	30602003	HD01	前主轴	Shaft	1	
37	30603006	HD15	铜套	Bushing	1	
38	S02013	VD07-1	螺钉	Pin	2	
39	20123021	HD01-1	油线	Oil Wick	1	
40	30503005	VC01	铜套	Bushing	1	
41	20128031	CL13	垫片	Washer	1	
42	S10014	SM502	螺钉M5×4	Screw	2	
43	30508001	MH73	挡圈	Ring	1	
44	30604003	HD14	曲柄球	Crank	1	
45	305S14006	SM601	螺钉M6×9	Screw	2	
46	30602004	HD20	下横轴	Shaft	1	
47	20128031	CL13	垫片	washer	1	
48	30604006	HE13	曲柄	Crank	1	
49	30522011	NQ21	油封	Oil Seal	1	
50	3060500800	-----	曲柄球组件	Crank Assembly	1	
51	3060500200	-----	牙架偏心凸轮组件	Felt	1	

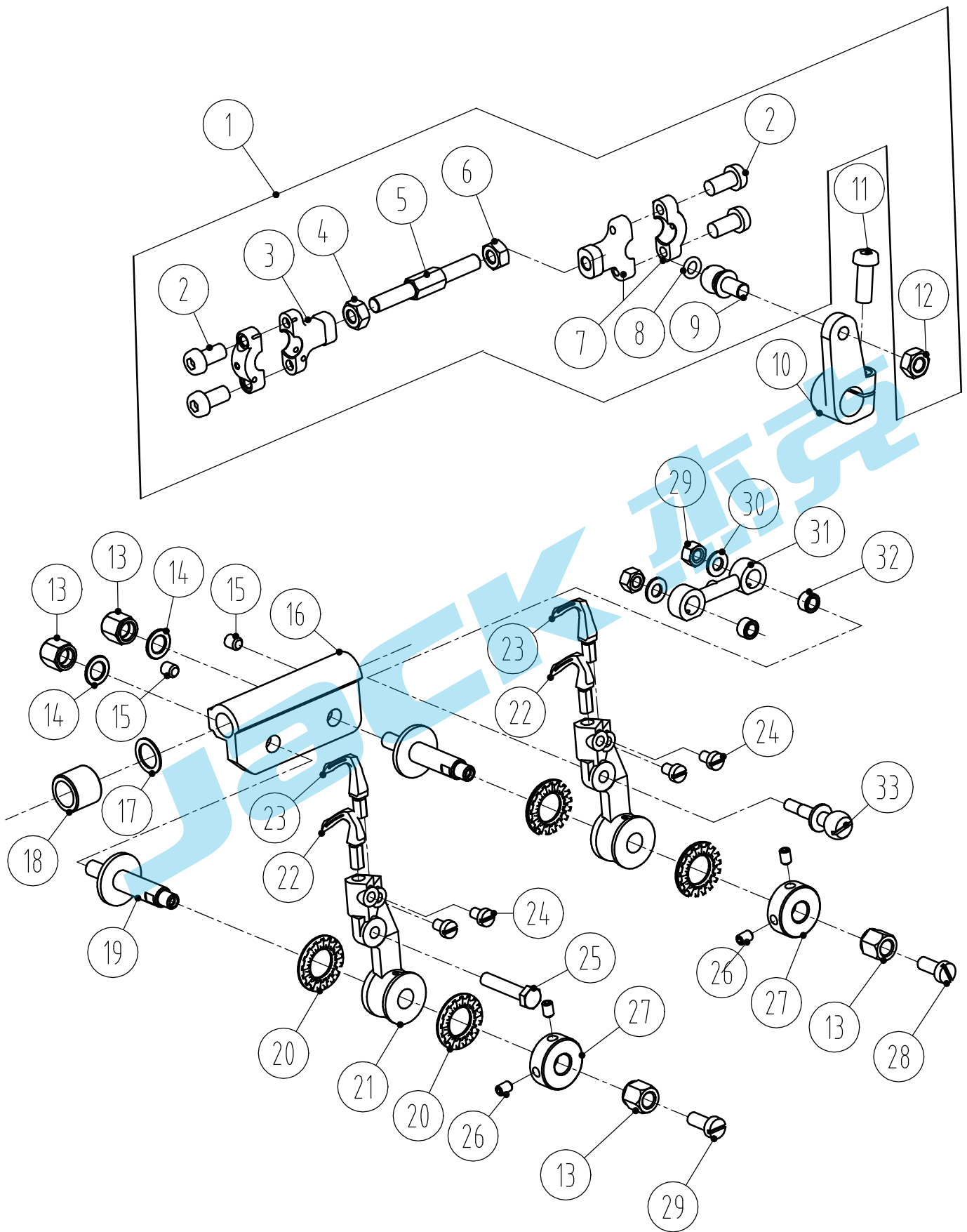
六.弯针轴部件/Looper shaft assemblies



## 六.弯针轴部件/Looper shaft assemblies

序号 No	件号 Par No.	参考件号 Ref.Part.No	名称	Description	数量 Number	备注 Remark
1	30603007	HE23	套筒	Bushing	1	
2	20128010	KL11	垫片	Washer	1	
3	20123021	HE14-2	油线	Oil wick	1	
4	30602005	HE14	弯针轴	Shaft	1	
5	201S14002	SK270-2	螺钉	Screw	2	
6	30510001	VC25	偏心凸轮	Eccent	1	
7	30524001	VC24	轴承	Bushing	2	
8	30605002	HE19	连杆	Link	1	
9	30508004	VC23	卡簧	Spring	1	
10	30608004	HE25	挡圈	Ring	1	
11	S05004	SM511	螺钉M5×14	Screw	1	
12	30603014	VE03	套筒	Bushing	1	
13	30608003	MH74	挡圈	Ring	1	
14	S010005	SK216	螺钉M3×3	Screw	1	
15	N01004	NM511	螺母	Nut	1	
16	W01004	WM500	垫圈5	Washer	1	
17	30604004	HE01	弯针倒前曲柄座	Link	1	
18	30612012	ME06	压板	Link	1	
19	306S30008	SM080	螺钉	Screw	1	
20	S01063	SM032	螺钉M2.5×6	Screw	1	
21	306S30007	ME18	销子	Pin	2	
22	H05003	EM050	垫圈5	Washer	1	
23	O01016	VMR06	O形圈6*1.8	Washer	1	
24	30603008	HE17	调节销外套	Bushing	1	
25	30627001	HE16	密封圈	Washer	1	
26	30626004	HE18	调节销	Link	1	
27	30604005	HE03	曲柄	Crank	1	
28	S05004	SM511	螺钉M5×14	Screw	1	
29	30627002	HE04	弹簧	Spring	1	
30	30626005	HE05	锥销	Pin	2	
31	S01030	SM140	螺钉M3.5×9.7	Screw	2	
32	3060500200	-----	弯针轴偏心连杆组件	Felt	1	

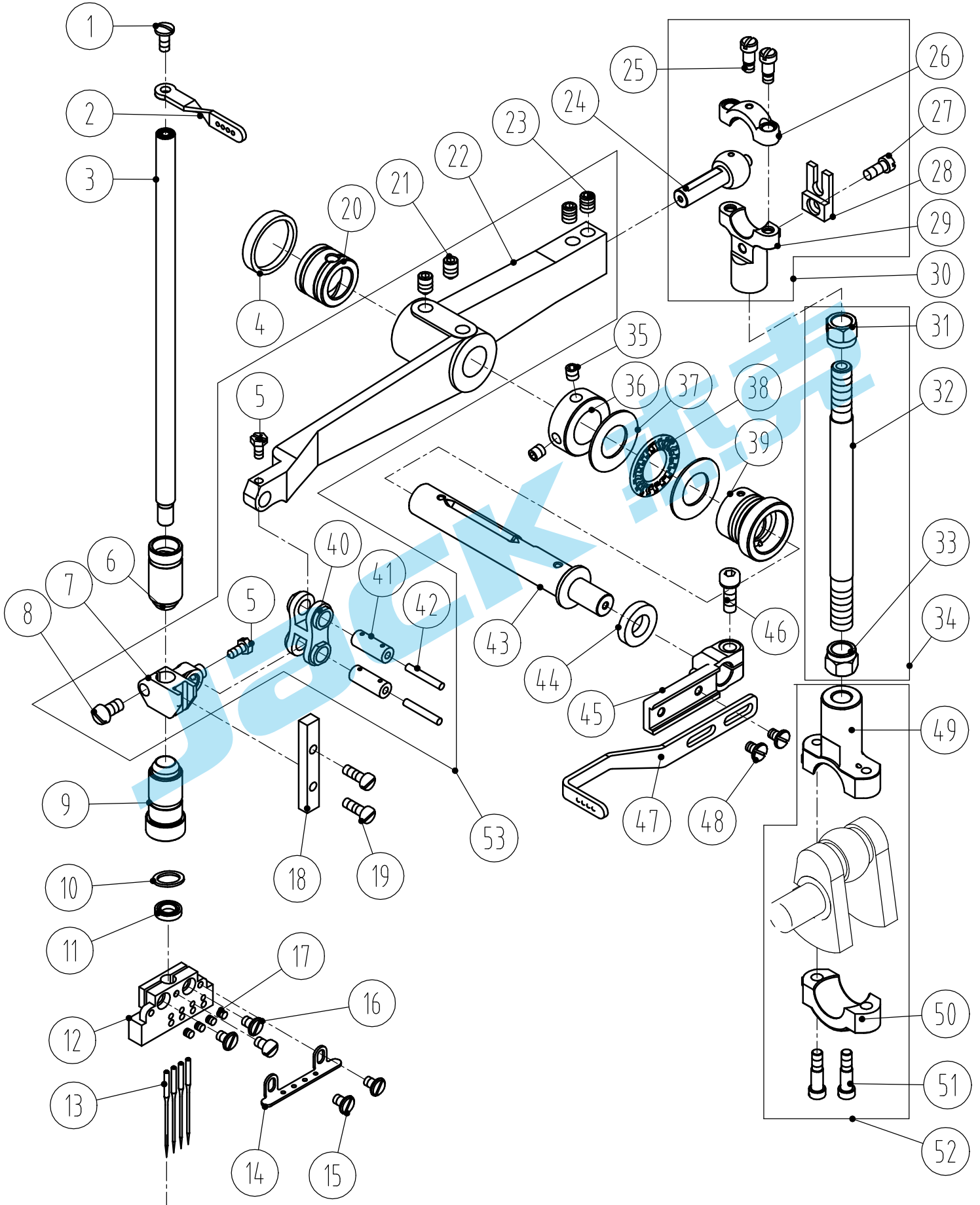
七、下弯针部件/Lower looper assemblies



## 七、下弯针部件/Lower looper assemblies

序号 No	件号 Par No.	参考件号 Ref.Part.No	名称	Description	数量 Number	备注 Remark
1	3060501500	-----	小连杆组件	Link Assy.	1	
2	306S20007	SM139	螺钉	Screw	4	
3	30605009	HE27	小连杆	Link	1	
4	N01007	NM612	螺母M6	Nut	1	
5	306S30010	HE11	连杆螺杆	Screw	1	
6	306S16002	NM610	螺母 (左)	Nut	1	
7	30605012	HE37	连杆组件	Link Assy.	1	
8	306S20008	VMR06	垫片	Washer	1	
9	306S30011	HE12	球形连接螺柱	Screw	1	
10	30604006	HE13	曲柄	Crank	1	
11	S05002	SM612	螺钉M6×15	Screw	1	
12	305S16007	NM611	螺母M6	Nut	1	
13	306S16003	NM602	六角螺母	Nut	4	
14	11628004	WM810	垫片	Washer	2	
15	305S14007	SM601	螺钉M6×8	Screw	2	
16	30605013	HE06	弯针架座	Rivit Seat	1	
17	20128010	KL11	垫片	Washer	1	
18	30603009	HE20	套筒	Bushing	1	
19	306S30012	ZD18	弯针架螺钉	Screw	2	
20	30624001	WM600	平面滚针	Bearing	4	
21	30604007	HE07	弯针架	Looper Holder	2	
22	30617003	HE22	前弯针	looper	2	
23	30617002	HE21	后弯针	looper	2	
24	306S11006	SM131	螺钉M3.5×13	Screw	4	
25	306S11003	SK254	外六角头螺钉	Screw	1	
26	201S14002	SK270	螺钉	Screw	4	
27	30608005	ZD20	挡圈	Ring	2	
28	S01028	SM134	螺钉M3.5×5.7	Screw	2	
29	201S16003	NK29	螺帽	Nut	2	
30	30128032	WM500	垫圈5	Washer	2	
31	30605014	HE08	弯针连杆	Looper Link	1	
33	30603010	KQ34	轴套	Bushing	2	
32	306S30009	HE10	球型连接螺柱	Screw	1	

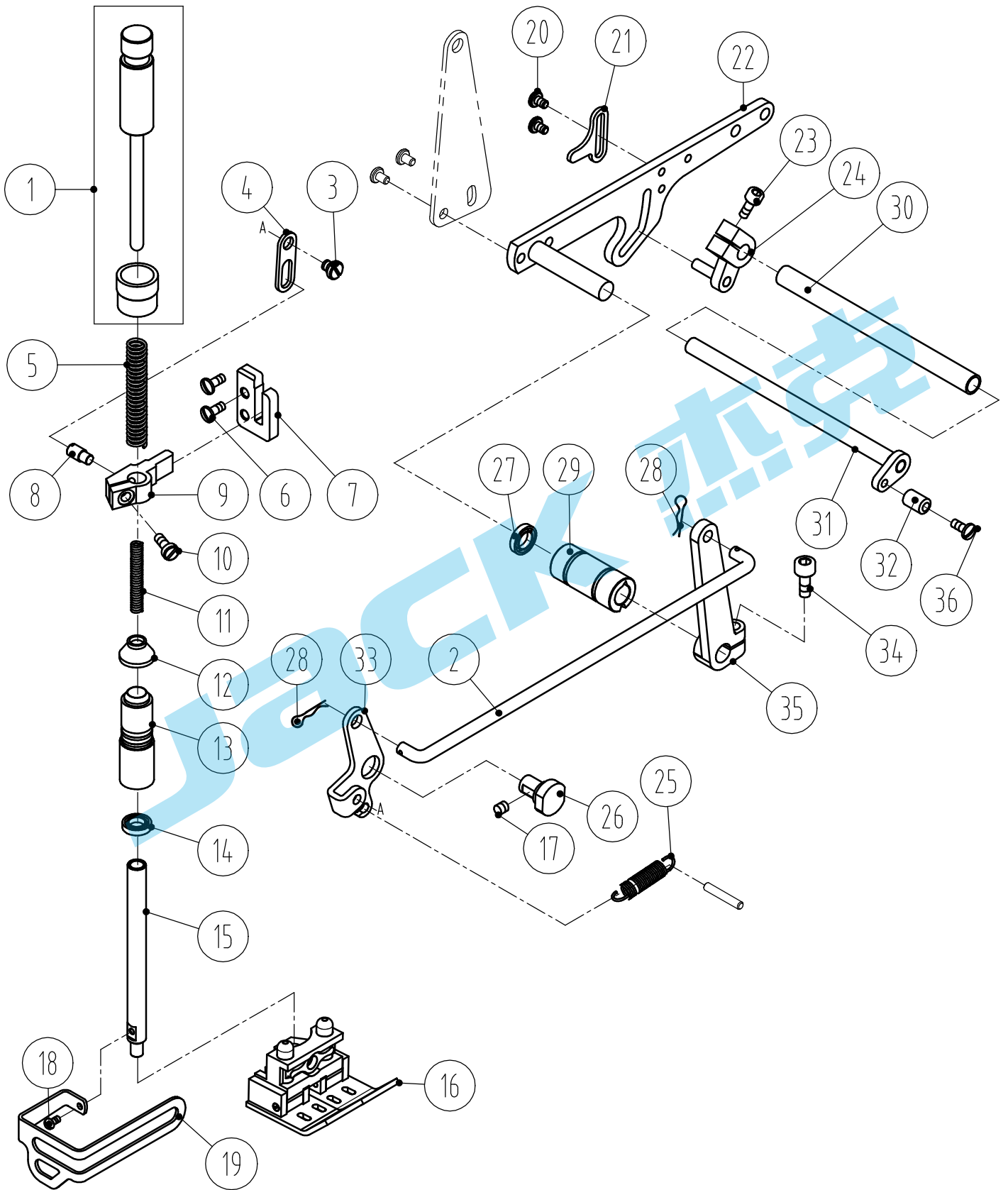
八、针杆部件/Needle bar assemblies



## 八、针杆部件/Needle bar assemblies

序号 No	件号 Par No.	参考件号 Ref.Part.No	名称	Description	数量 Number	备注 Remark
1	S01005	SM132	螺钉M4×10	Screw	1	
2	30513003	VF19	过线	Thread guide	1	
3	30502011	VF12D	针杆	Needle bar	1	
4	3052201200	VF07	油封	Oil Seal	1	
5	305S12004	SM184	螺钉	Screw	2	
6	30503021	VF13	铜套	Bushing	1	
7	30509006	VF09	针杆滑块	Needle slider	1	
8	S01011	SM532	螺钉M5×10	Screw	1	
9	30503022	VF14	铜套	Bushing	1	
10	30523013	-----	油棉	Oil Wick	1	
11	3052201500	-----	骨架油封 $\phi 7.8 \times \phi 14 \times 3$	Oil Seal	1	
12	30634001	M8XXX	针夹头	Needle Holer Assy.	1	
13	30617004	UY128GAS	机针	Needle	4	
14	30613003	M9XX4-1	针夹头过线	Thread guide	1	
15	305S11005	SK239	开槽圆柱头螺钉SM9-64×40×4	Screw	2	
16	305S11004	-----	开槽圆柱头螺钉SM11-64×40	Screw	2	
17	305S14002	SK216	螺钉	Screw	4	
18	30509007	VF11D	针杆止摆导轨	Rivet	1	
19	207S11008	SM438	螺钉M4×12	Screw	2	
20	30503023	VF06	铜套	Bushing	1	
21	305S14006	SM601	内六角锥端紧定螺钉M6×0.75×9	Screw	2	
22	30505009	VF01	大扛杆	Lever	1	
23	305S14007	SM600	内六角平端紧定螺钉M6×0.75×8	Screw	2	
24	30526011	VF16	曲柄球	Crank	1	
25	S05010	SK491	驱动杠杆球连杆螺钉	Screw	2	组件3050402400
26	30505010	-----	驱动杠杆上球连杆	Crank	1	
27	305S13019	SK277	驱动杠杆球曲柄止摆块螺钉	Screw	1	
28	30512028	VF22	驱动杠杆球曲柄止摆块	Cover	1	
29	30505011	-----	驱动杠杆下球连杆	Crank	1	
30	3050402400	-----	驱动杠杆球连杆组件	Crank Assembly	1	
31	305S16002	NK54	螺母SM3/8"×24×10左旋	Nut	1	组件3050203000
32	30502012	-----	主轴大连杆调节杆	Crank	1	
33	305S16003	NK53	螺母SM3/8"×24×10	Nut	1	
34	3050203000	VF23D	主轴大连杆调节杆组件	Connection assy.	1	
35	207S11042	SM502	内六角平端紧定螺钉M5×5	Screw	2	GB/T77
36	30508006	VF05	挡圈 $\phi 14 \times \phi 27 \times 10$	Ring	1	
37	30528003	VF04	垫圈 $\phi 15 \times \phi 27.8 \times 1$	Washer	2	
38	30524002	-----	平面滚针轴承 $\phi 15 \times \phi 28 \times 1.4$	Bearing	1	
39	30503024	VF03	铜套	Bushing	1	
40	30505012	VF08	针杆链条节	Crank	1	
41	30526008	VF10	针杆链条节销	Pin	2	
42	20123021	VC11	油线	Oil Seal	1	
43	30502013	VF02	上横轴	Shaft	1	
44	21322019	-----	FB型骨架油封 $\phi 10 \times \phi 19 \times 4$	Oil wick	1	
45	30509010	VF17	过线固定座	Thread Guide Rivet Se	1	
46	S05004	SM511	螺钉M5×14	Screw	1	
47	30513005	HK18	过线	Thread guide	1	
48	113S11004	SM438	螺钉M4×8	Screw	2	
49	30505013	-----	后主轴上球连杆	Crank	1	组件30605004
50	30505014	-----	后主轴下球连杆	Crank	1	
51	S05068	-----	内六角平头螺钉M5×20	Screw	2	
52	30605004	-----	后主轴球连杆组件	Crank Assembly	1	
53	3050500900	VF01	针杆驱动杠杆组件	Lever	1	组件3050500900

# 九、压脚部件/Presser foot assemblies



## 九、压脚部件/Presser foot assemblies

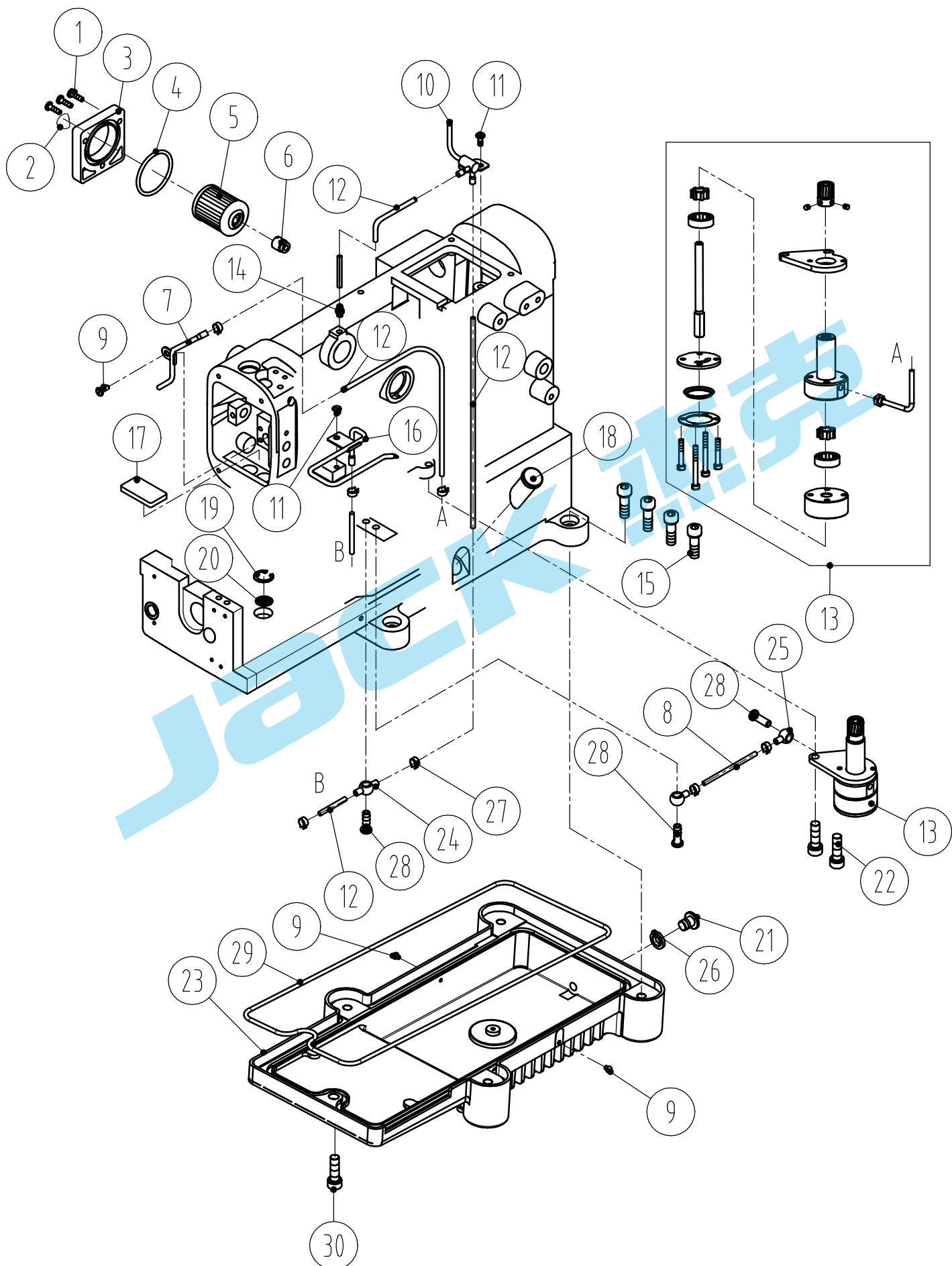
序号 No	件号 Par No.	参考件号 Ref.Part.No	名称	Description	数量 Number	备注 Remark
1	3013002500	VJ16	调压螺杆组件	Adjusting Bar Assy	1	
2	30512035	VJ09	抬压脚拉杆	Link	1	
3	305S20009	SK518	抬压脚吊板轴位螺钉M5	Screw	1	
4	30512029	VJ13	抬压脚吊板	Bracket	1	
5	30527007	MJ03	调压弹簧	Spring	1	
6	S01038	SM438	开槽球面圆柱头螺钉M4×10	Screw	2	
7	30509011	VJ20	压脚轴导架导轨	Slider	1	
8	305S11007	SK502	抬压脚吊板销钉M5	Screw	1	
9	30509012	VJ07	压脚轴导架	Slider	1	
10	301S11009	SK265	压脚轧头螺钉	Screw	1	
11	30527008	MJ12	压脚轴轴内弹簧	Spring	1	
12	30522014	MJ13	压脚轴轴套上防油套	Oil Seal	1	
13	30503025	VJ21	压脚轴轴套	Bushing	1	
14	3052201500	MJ17	骨架油封 $\phi 19 \times \phi 14 \times 3$	Oil Seal	1	
15	30502015	VJ18	压脚轴	Shaft	1	
16	30616001	P9****	压脚组件(HF)	presser foot assy	1	
17	207S11042	SM502	内六角平端紧定螺钉M5×5	Screw	1	
18	S01027	SM332	开槽圆柱头螺钉M3×6	Screw	1	
19	30512030	VJ23	压脚护罩	Eye Guide	1	
20	113S11004	SM431	开槽圆柱头螺钉M4×8	Screw	2	
21	30512031	VJ03	抬压挺线限位块	Bracket	1	
22	3051203200	VJ05-2	抬压挺线杠杆组件	Lever Assembly	1	
23	S05004	SM534	内六角圆柱头螺钉M5×14	Screw	1	
24	30504011	VJ04	抬压挺线后曲柄组件	Tighten	1	
24	30504027	-----	紧固座		1	
24	30526012	-----	销子	Pin	1	
25	30527010	VJ14	抬压复位弹簧	Spring	1	
26	30526014	VJ12D	抬压脚前支点架销	Pin	1	
27	3052201700	KL20	骨架油封 $\phi 9.1 \times \phi 15 \times 3$	Oil Seal	1	
28	30527009	VJ10	抬压脚拉杆开口销	Pin	2	
29	30503026	VJ06D	抬压挺线杠杆轴轴套	Bushing	1	
30	30502016	VJ02	抬压挺线曲柄轴套	Thread Guide	1	
31	3050201700	VJ03	抬压挺线曲柄轴组件	Shaft	1	
31	30502018	-----	松线轴	Shaft	1	
31	30512034	-----	连接板	Carko	1	
32	30510006	VJ01-3	抬压挺线曲柄偏心调节套	Eccent Bushing	1	
33	30512036	VJ11D	抬压脚前支点架	Crank	1	
34	S05002	SM612	内六角圆柱头螺钉M6×0.75×15.2	Screw	1	
35	30504012	VJ08	抬压脚后曲柄	Crank	1	
36	207S11008	SM438	开槽圆柱头螺钉M4×12	Screw	1	



## 十、夹线器部件/Tension spring assemblies

序号 No	件号 Par No.	参考件号 Ref.Part.No	名称	Description	数量 Number	备注 Remark
1	30512038	VK13	挡线架	Bracket	1	
2	S09012	SM404	螺钉M4×5	Screw	1	
3	30513009	VK15	过线	Thread Guide	1	
4	S02003	SM450	螺钉M4×5	Screw	1	
5	30513013	VK11	过线	Thread Guide	1	
6	113S11004	VK18	螺钉M4×8	Thread Guide	9	
7	30513012	VK11	过线	Thread Guide	1	
8	30513010	VK11	过线	Thread Guide	1	
9	30513011	VK22	过线	Thread Guide	1	
10	20628012	MW400	垫圈	Washer	7	
11	P03025	PM413	定位销φ4×12	Pin	2	
12	30613004	HK09	过线	Thread Guide	2	
13	30626007	PM413	销子4.6×12	Pin	1	
14	30622004	MB14	橡皮塞	Plug	1	
15	30531047	-----	夹线器组件	Tension Spring Assy	1	
16	S01063	SM031	螺钉	Screw	2	
17	W01005	MW400	垫圈	Washer	2	
18	30613005	HK06	左过线板	Bracket	1	
19	30613006	HK05	右过线板	Bracket	1	
20	S01028	SM131	螺钉M3.5×5.7	Screw	2	
21	30612015	HK02	压线簧	Spring	1	
22	30613007	HK07	过线	Thread Guide	1	
23	30612013	HK03	压线调节板	Bracket	1	
24	N01001	NM410	螺母M4	Nut	3	
25	113S11004	VK18	螺钉M4×8	Thread Guide	5	
26	30612014	HK01	打线支架	Bracket	1	
27	30613008	HK08	过线	Thread Guide	1	
28	30612016	HK04	调节板	Bracket	1	
29	30602007	KN40	夹线轴	Shaft	1	
30	30612026	KN42	夹线盘	Reservoir Assy	2	
31	30627004	KN43	夹线弹簧	Spring	1	
32	306S16005	KN44	打线架夹线器调压螺母	Ring	1	

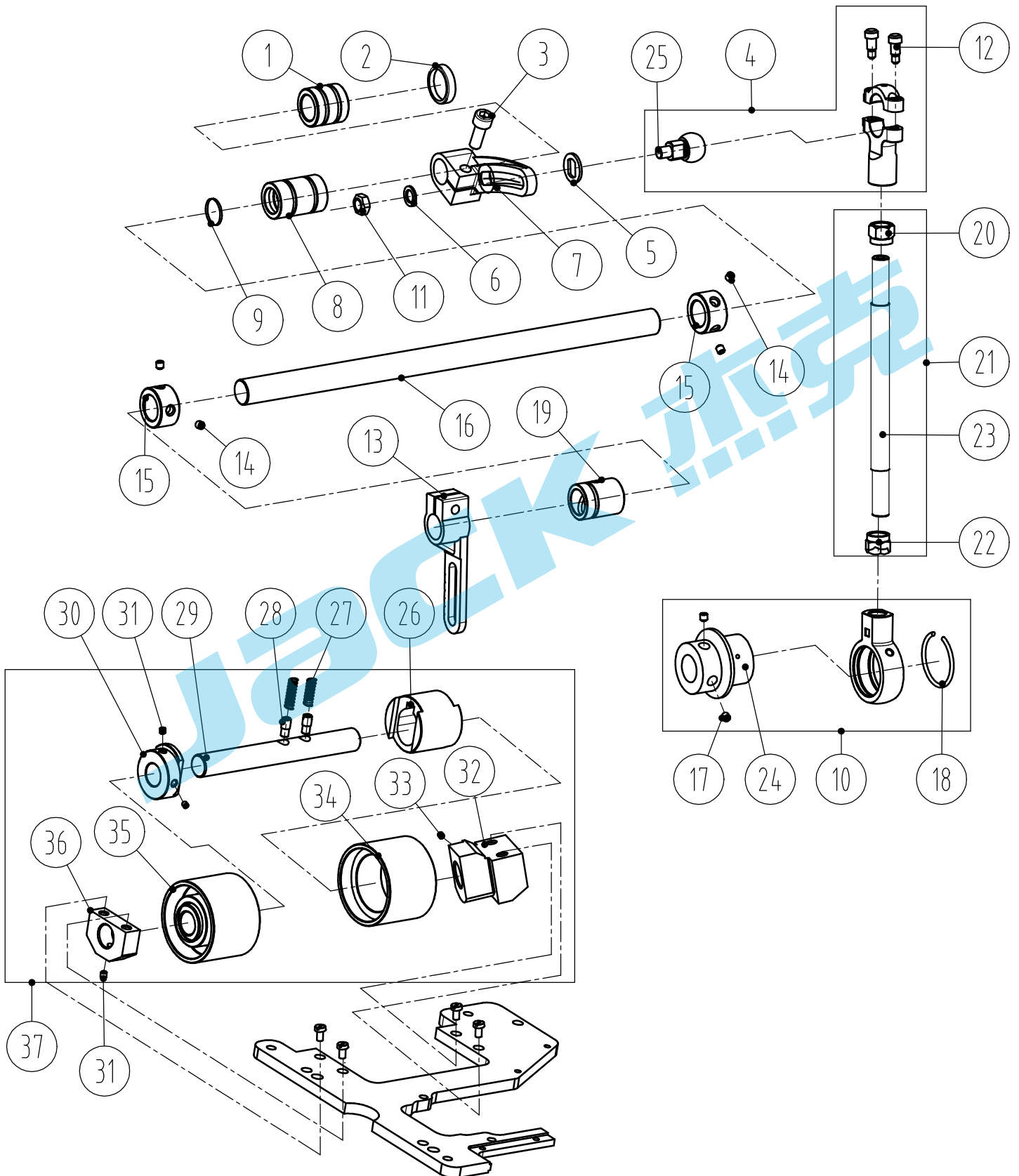
# 十一、油泵部件/Pump assemblies



## 十一、油泵部件/Pump assemblies

序号 No	件号 Par No.	参考件号 Ref.Part.No	名称	Description	数量 Number	备注 Remark
1	S01057	SM447	螺钉 M4×15	Screw	3	
2	20337005	KT18	商标	Brand	1	
3	20301005	KT16	滤清器盖	Cover	1	
4	001010	KT17	O型橡胶密封圈	sticker	1	
5	20136001	KT14	滤清器	Filter Element	1	
6	30503027	ML50	铜接头	pipe	1	
7	30521012	VL14	油管	Tube	1	
8	30112021	VL19	油管	Tube	1	
9	207S11011	SM431	开槽圆柱头螺钉M4×5	Screw	1	
10	30521013	VL11	油管	Tube	1	
11	113S11004	SM435	螺钉 M4×8	Screw	2	
12	30121022	VL16	油管	Tube	1	
13	3052000100	ML01	油泵	Pump	1	
14	30536001	VL12	油管接头	Joint	1	
15	305S13003	SM812	螺钉 M8×25	Screw	4	
16	3062100200	VL07	油管组件	Tube Assembly	1	
17	30523010	VL13	油棉	Felt	1	
18	30511004	VL06D	油窗	Oil Window	1	
19	H01005	EM164	卡簧	Spring	1	
20	30512040	MB15	滤网	filter	1	
21	305S11010	SK310	放油螺钉 SM3/8×28	Screw	1	
22	305S13004	SM611	螺钉 M6×14.8	Screw	2	
23	30601006	HL01	油盘	Oil Reservoir Assy	1	
24	30136005	VL12	双头油管接头	Joint	1	
25	20636001	VL17	油管接头	Tube	2	
26	20528014	KT56	放油螺钉密封圈	sticker	1	
27	20129002	KT26*11	卡口	Ring	2	
28	301S30013	SK304	螺钉 SM1/4×40	Screw	3	
29	30622005	HL02	油盘油封	Oil Seal	1	
30	S05007	-----	螺钉M8×20	Screw	1	

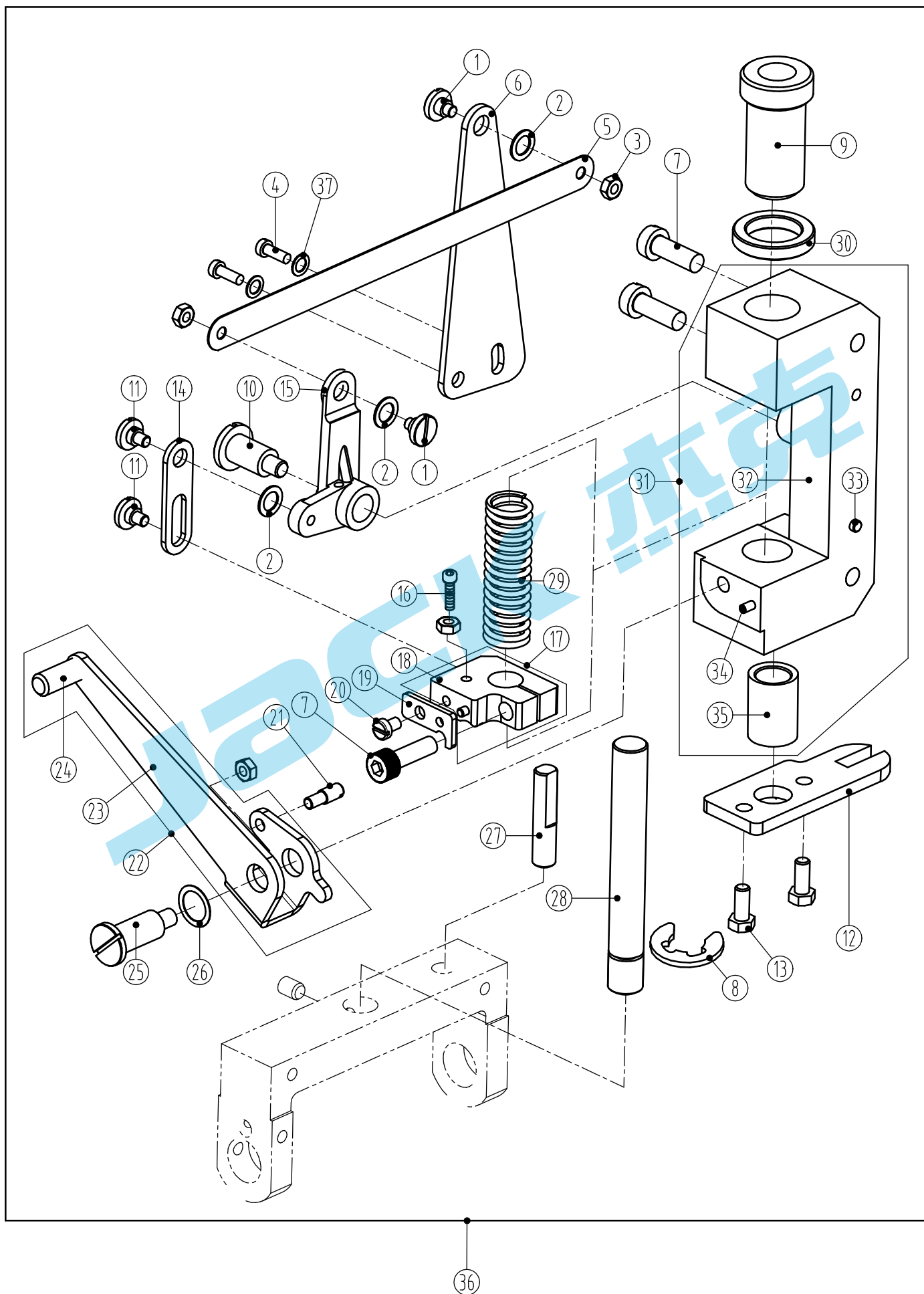
## 十二、传送部件/Transmission assemblies



## 十二、传送部件/Transmission assemblies

序号 No	件号 Par No.	参考件号 Ref.Part.No	名称	Description	数量 Number	备注 Remark
1	30503028	VCL07	铜套	Bushing	1	
2	30522019	CL14	油封	Oil Seal	1	
3	S05002	SM617	螺钉M6×0.75×15.2	Screw	1	
4	3050402600	-----	曲柄球组件	Crank Assembly	1	
5	30512045	VCL05-1	垫片	Washer	1	
6	30328007	WM600	垫圈6	Washer	1	
7	30504013	VCL06	曲柄	Crank	1	
8	30503029	VCL09	铜套	Bushing	1	
9	30522020	VCL10	油封	Oil Seal	1	
10	3051001100	CVL02D	连杆组件	Link assy	1	
11	305S16007	NM611	螺母M6	Nut	1	
12	305S20007	SK491	螺钉	Screw	2	
13	30504015	VCL14	曲柄	Crank	1	
14	S10014	SM501	螺钉M5×4	Screw	4	
15	30508007	VCL11	挡圈	Ring	2	
16	30502020	VCL12	后拖轮传送轴	Shaft	1	
17	S09002	SM603	螺钉M6×6	Screw	2	
18	30508009	VCL03	卡簧	Spring	1	
19	30503030	VCL13	铜套	Bushing	1	
20	305S16002	NK54	螺帽	Nut	1	
21	3050203100	-----	连杆组件	Link assy	1	
22	305S16003	NK53	螺帽	Nut	1	
23	30502012	VF23D	传送杆	Connection	1	
24	30510010	VCL01	偏心凸轮	Eccent	1	
25	305S30005	VCL05	曲柄球	Crank	1	
26	30603012	HB08	铜套	Bushing	1	
27	30603015	VCL23	弹簧	spring	2	
28	30603016	CL18	螺钉	Screw	2	
29	30602006	HB05	轴	shaft	1	
30	30608006	HB07	挡圈	Ring	1	
31	S09013	-----	螺钉	Screw	5	
32	30609004	HB01	挡块	Stop Dog	1	
33	S09019	-----	螺钉	Screw	1	
34	30625002	HB03	滚轮	roller	1	
35	3062500600	-----	滚轮组件	Roller components	1	
36	30609001	HB04	挡块	Stop Dog	1	
37	306250800	-----	高低滚轮组件	Roller assembly	1	

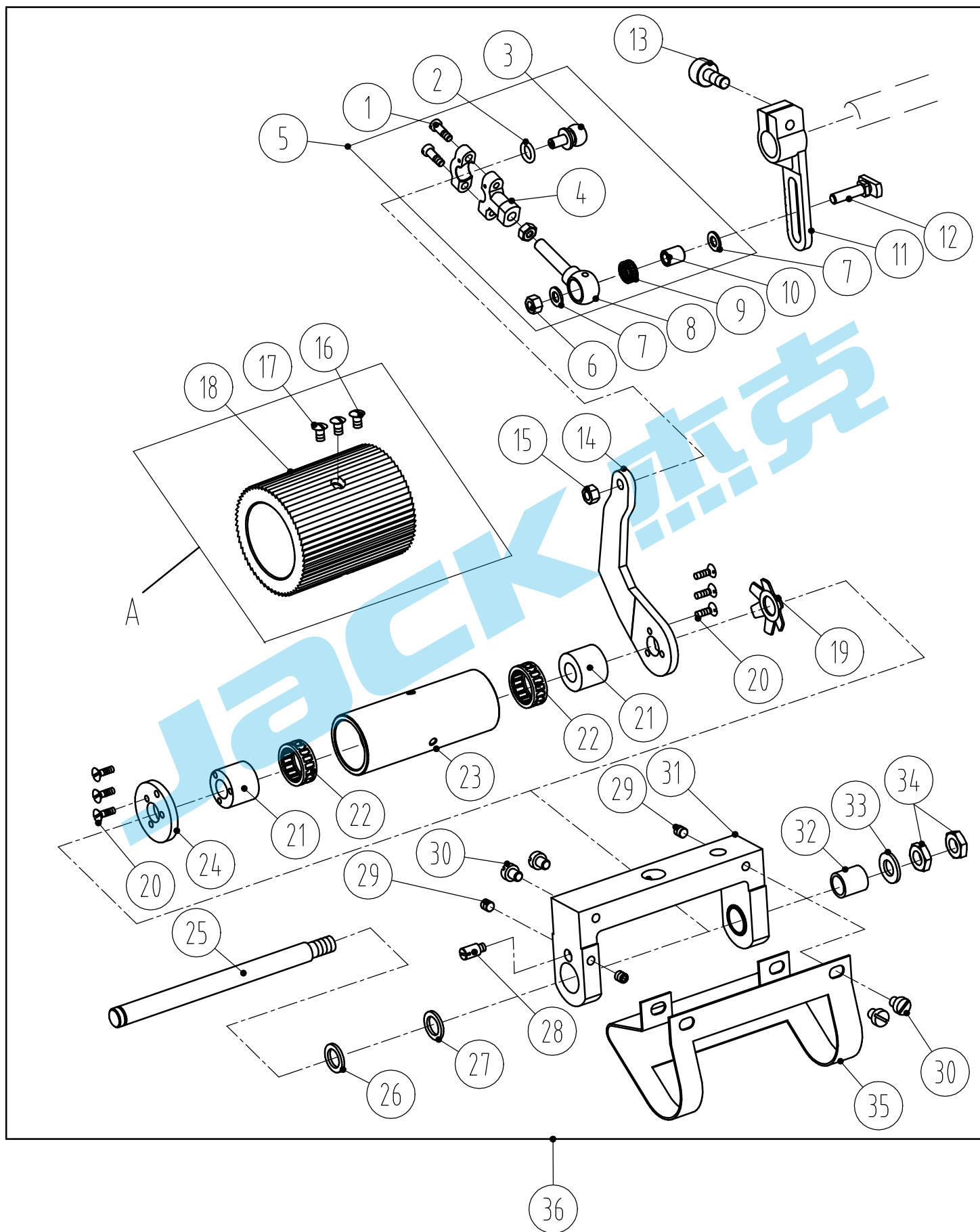
十三、后拖轮架部件/After Cam Fight assemblies



### 十三、后拖轮架部件/After Cam Fight assemblies

序号 No	件号 Par No.	参考件号 Ref.Part.No	名称	Description	数量 Number	备注 Remark
1	305S20010	SM491	轴位螺钉M4	Screw	1	
2	30528011	CL31	橡胶垫圈 $\phi 7 \times \phi 11 \times 0.6$	Washer	4	
3	N01001	NM410	六角螺母M4	Nut	4	
4	305S13013	SM531	内六角圆柱头螺钉M5×8	Screw	2	GB/T65
5	30512047	VCL25	后拖轮提升长连杆	Sheet Iron Link	1	
6	30512048	VCL35	后拖轮提升长连杆连接板	Bracket	1	
7	S05240	SM614	内六角圆柱头螺钉M6×20	Screw	2	GB/T70.1
8	H05011	EM123	开口挡圈9	Spring	1	
9	305S30006	CL25	后拖轮调压螺钉	Adjusting Screw	1	
10	305S20011	SM681	轴位螺钉M6	Screw	1	
11	305S20012	SM492	轴位螺钉M4	Screw	2	
12	30512053	CL33	后拖轮上下导轨	Regulator Plate	1	
13	207S1104	SM520	开槽六角头螺栓M5×9.5	Screw	2	
14	30512049	VCL23	后拖轮提升吊板	Bracket	1	
15	30504014	VCL24	后拖轮提升杠杆曲柄	Crank	1	
16	S05063	SM440	内六角圆柱头螺钉M4×25	Screw	1	GB/T70.1
17	30509013	-----	调压弹簧挡块组件	Spring Plate	1	组件30509013
18	30509015	VCL22	调压弹簧挡块	Spring Plate	1	
19	30512050	VCL34	后拖轮上下扳手限位板	Bracket	1	
20	S01055	SM448	开槽圆柱头螺钉M4×6	Screw	1	
21	305S11014	SM472	轴肩螺钉M4	Screw	1	
22	3051205100	CL33	后拖轮调节上下扳手组件	Regulator Plate	1	组件3051205100
23	30512052	-----	调节扳手	Regulator Plate	1	
24	30526016	-----	调节扳手柄	Regulator Plate	1	
25	305S20013	SM682	轴位螺钉M6	Screw	1	
26	30528012	CL34	波形弹性垫圈 $\phi 11 \times \phi 15 \times 0.3$	Bracket	1	
27	30526020	VCL19	后拖轮架上下导杆	Pin	1	
28	30502022	VCL30	后拖轮架座轴	Shaft	1	
29	30527017	CL28	后拖轮调压弹簧	Spring	1	
30	305S16006	-----	后拖轮调节螺母	Screw	1	
31	30501042	VCL21	后拖轮架座组件	Finger Guide	1	组件30501042
32	30526018	-----	后拖轮架座	Finger Guide	1	
33	30526019	-----	后拖轮架座销	Finger Guide	1	
34	30526023	PM302	销子	Pin	1	
35	30503031	CL26	后拖轮架座下铜套	Bushing	1	
36	3061000200	-----	后凸轮架座组件(齿轮式)	After Cam Assembly	1	
37	W03002	-----	弹簧垫圈5	Washer	2	

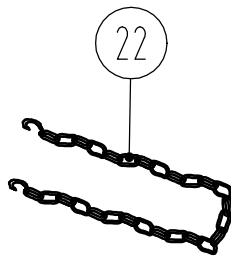
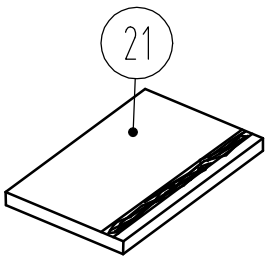
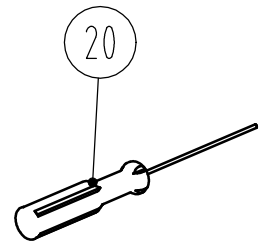
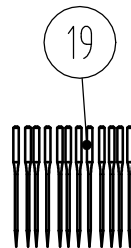
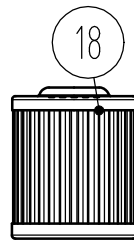
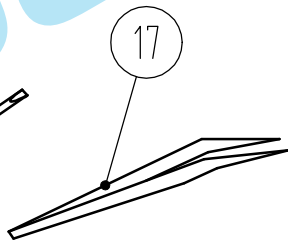
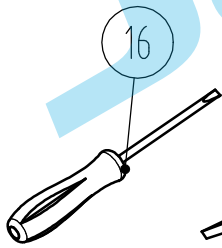
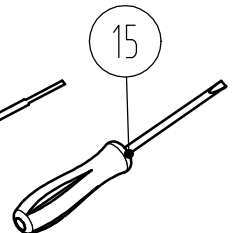
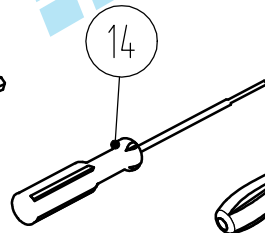
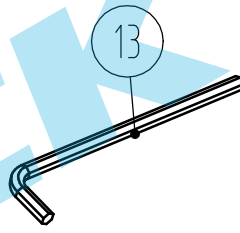
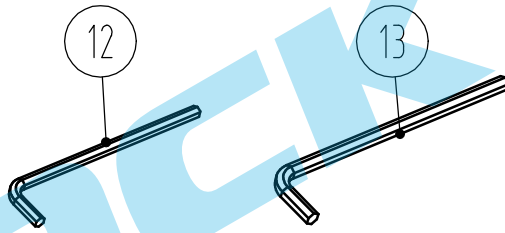
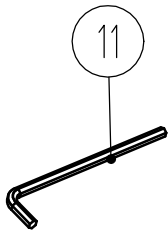
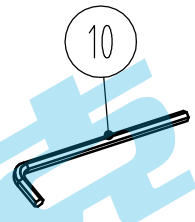
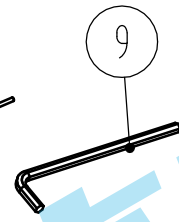
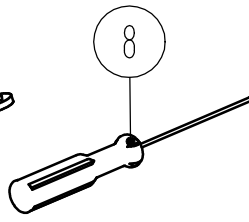
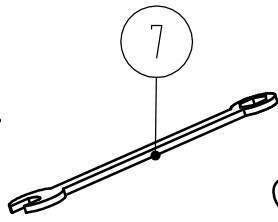
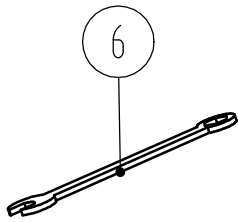
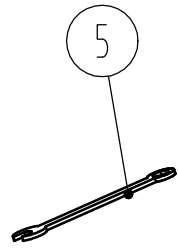
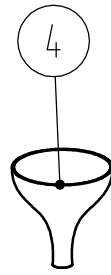
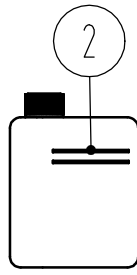
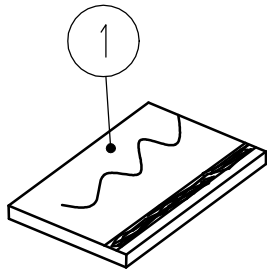
十四、后拖轮部件 / After Cam assemblies



#### 十四、后拖轮部件/ After Cam assemblies

序号 No	件号 Par No.	参考件号 Ref.Part.No	名称	Description	数量 Number	备注 Remark
1	305S30007	SM524	螺钉 M5×8.5	Screw	1	
2	30522021	CL48	垫圈5	Washer	2	
3	30526011	CL49	曲柄球	Iron Cover	1	
4	30503034	CL50	连杆	Bearing	1	
5	3050501700	CL51	连杆组件	connection Assy	1	
6	N01004	NM511	螺帽	Nut	1	
7	W01004	CL48	垫圈5	Washer	1	
8	30505020	CL50	连杆	Bearing	1	
9	B07011	CL49	滚针轴承	Iron Cover	1	
10	30503034	-----	铁套	Bushing	1	
11	30504015	VCL14	曲柄	Crank	1	
12	305S30009	CL47	螺钉	Screw	1	
13	S05037	SM612	螺钉 M6×15	Screw	1	
14	30512055	CL37	冲压件铁臂	Jib	1	
15	N01004	NM511	螺母M5	Nut	1	
16	S03003	SM451	螺钉 M4×6	Screw	3	
17	3061000200	VCL16	后凸轮组件	After Cam Assy	1	
18	30625003	VCL08	压轮组件	Press Wheel	1	
19	30512056	CL38	蝶形卡簧	Spring	1	
20	S02014	SK373	螺钉 M3.5×8.5	Screw	5	
21	30503063	-----	轴承套	Bushing	2	
22	NSK FC-20	-----	单向滚针轴承	Bearing	2	
23	30503035	VCL15	齿轮套	Gear Wheel Cover	1	
24	30512057	CL45	压板	Bracket	1	
25	30502023	VCL17	轴	Shaft	1	
26	H04004	CL41	挡圈	Washer	5	
27	W01046	CL41	垫片	Washer	1	
28	305S11012	SM470	螺钉	Screw	1	
29	S09008	SM502	螺钉 M5×5	Screw	2	
30	S01065	-----	螺钉 M5×6	Screw	4	
31	3050100800	VCL18	压轮架	Press Wheel Fight	1	
32	30503036	VCL31	轴套	Bushing	1	
33	W01010	WM800	垫圈8	Washer	1	
34	N01008	NM810	螺母 M8	Nut	2	
35	30512054	-----	挡板	Plate	1	
36	3061000200	-----	后拖轮组件	After Cam Assembly	1	

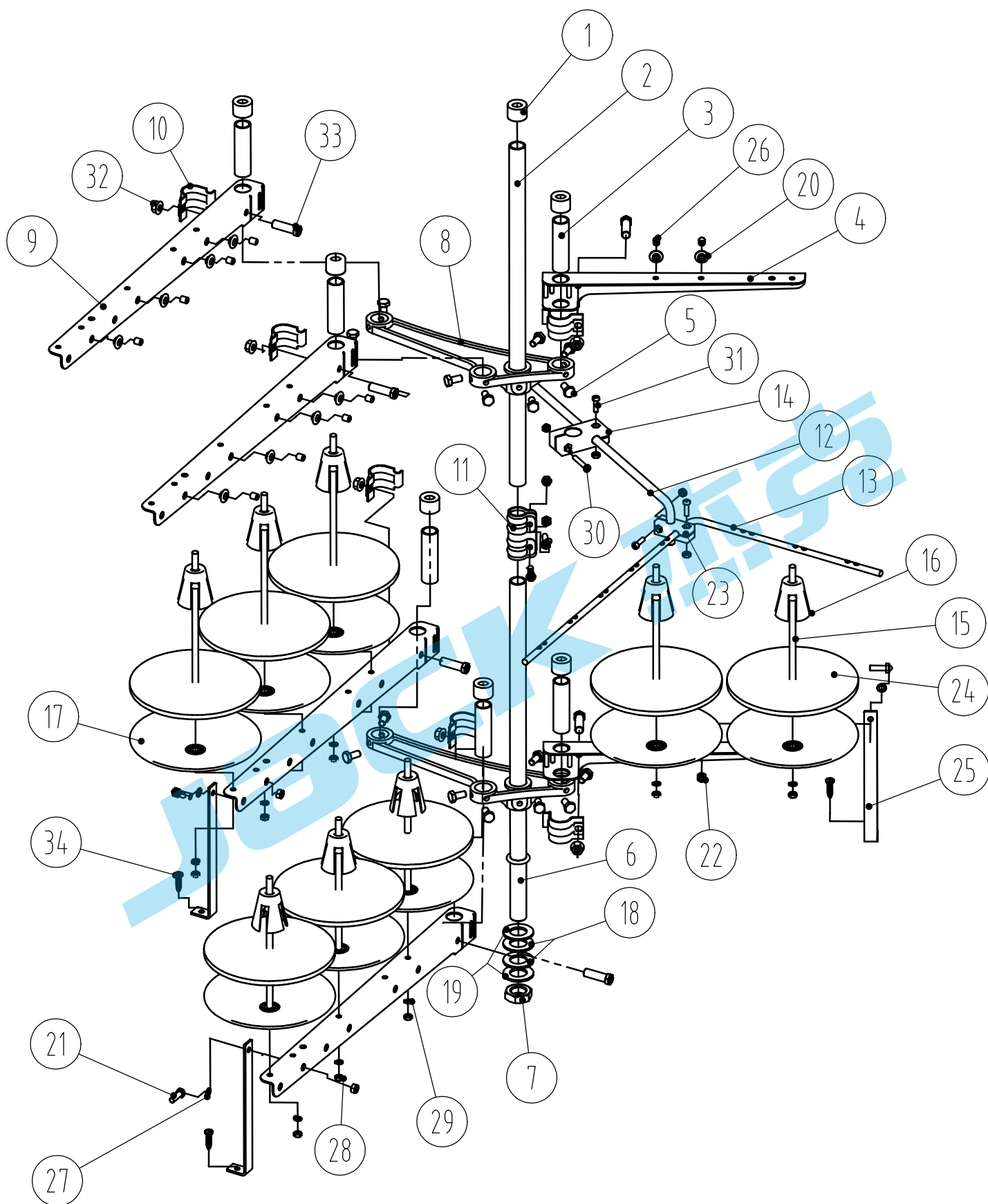
十五、附件(1)/Accessories Assemblies



## 十五、附件(1)/Accessories Assemblies

序号 No	件号 Par No.	参考件号 Ref.Part.No	名称	Description	数量 Number	备注 Remark
1	4013017	-----	防尘罩	dust guard	1	
2	20131037	MY02	油壶	Oil Can	1	
3	20131038	MY03	小油壶	Oil Can	1	
4	20131039	KY04	漏斗	Oil Funnel	1	
5	20131041	KY07	6mm六角扳手	Spanner (6mm)	1把	
6	20131042	KY08	7mm六角扳手	Spanner (7mm)	1把	
7	20131043	KY09	8mm六角扳手	Spanner (8mm)	1把	
8	20131044	MY09	内六角螺丝 (1.5mm)	Inner-hexagon Driver	1把	
9	20131046	MY08	2mm内六角扳手	Inner-hexagon Driver	1把	
10	30131010	MY10	3mm内六角扳手	Inner-hexagon Driver	1把	
11	30131012	MY11	4mm内六角扳手	Inner-hexagon Driver	1把	
12	20131047	MY12	5mm内六角扳手	Inner-hexagon Driver	1把	
13	20131056	KY11	6mm内六角扳手	Inner-hexagon Driver	1把	
14	10131002	KY14	大号一字螺钉刀	Screw Driver	1把	
15	10131003	KY17	中号一字螺钉刀	Screw Driver	1把	
16	10131004	KY16	小号一字螺钉刀	Screw Driver	1把	
17	20131051	KY18	镊子	Tweezer	1	
18	20136001	KT14	滤油器	Oil Filter	1	
19	30617004	Uo113	机针	Needle	1包	
20	20131045	MY09	内六角螺丝 (1.6mm)	Inner-hexagon Driver	1	
21	30531029	-----	说明书零件样本	Parts list Instructi	1	
22	30131018	KY21	链条	Chain	1	
23	30135004	-----	皮带	Leather belt	1	

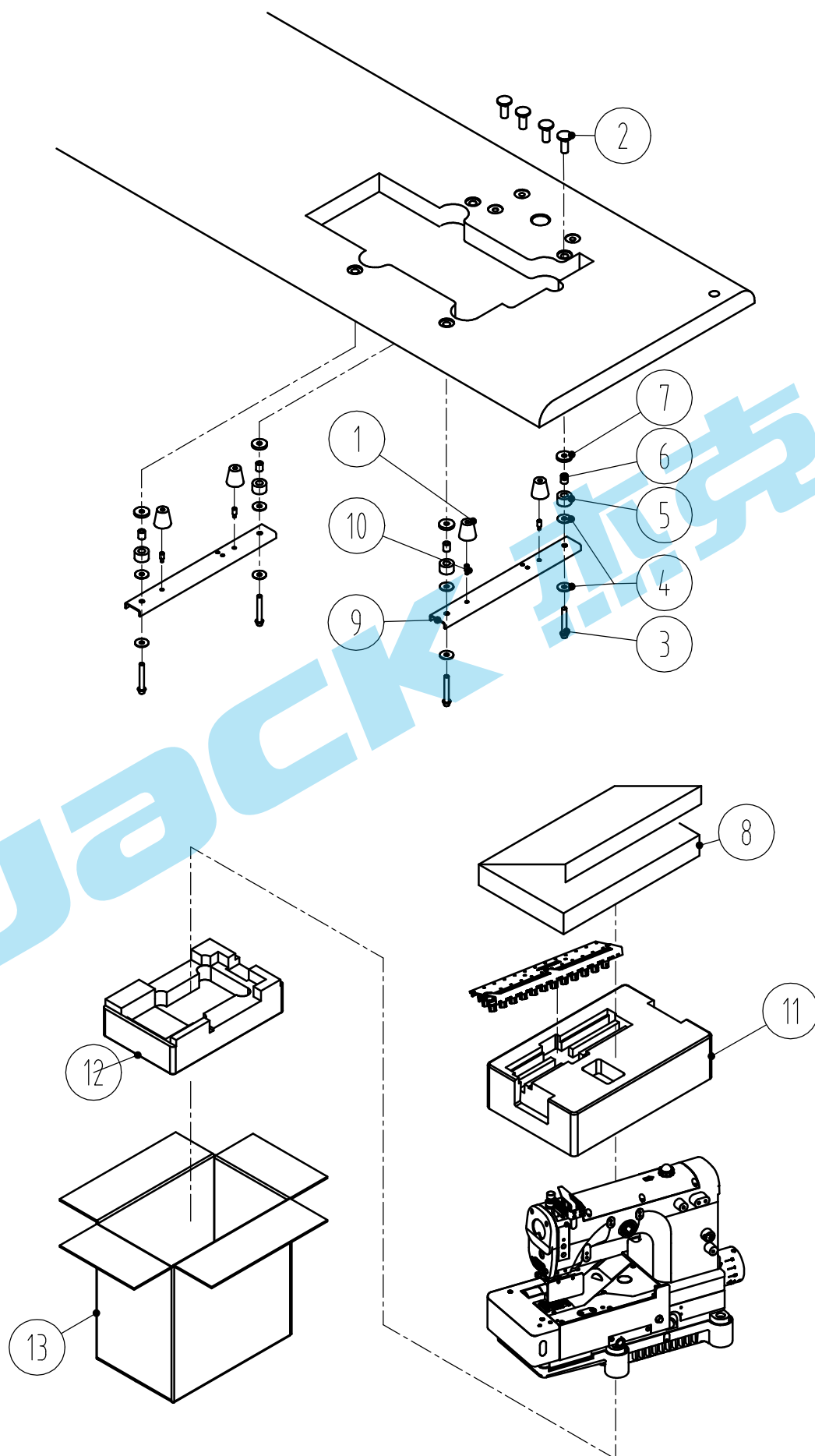
十六、附件(2)/Accessories Assemblies



## 十六、附件(2)/Accessories Assemblies

序号 No	件号 Par No.	参考件号 Ref.Part.No	名称	Description	数量 Number	备注 Remark
1	30531031	-----	棒帽	Cushion	7	线架组件30532002
2	30531062	-----	线架上管	Tube	1	
3	30531064	-----	短管	Tube	6	
4	30531067	-----	短过线架	Takeup	2	
5	421S12002	-----	六角头螺柱	Screw	16	
6	30531061	-----	线架下管	Tube	1	
7	305S16009	-----	螺母M16×1.5	Nut	1	
8	30531063	-----	支座	Slider	2	
9	30531068	-----	长过线架	Takeup	4	
10	30531069	-----	夹板	Bland	6	
11	30531070	-----	锁紧卡固	Slider	1	
12	30531065	-----	导线棒	Takeup	1	
13	30531066	-----	过线棒	Takeup	1	
14	30531032	-----	固定器	Slider	1	
15	20131006	-----	线托棒	Takeup	8	
16	20131008	-----	线圈定位套	Spacer	8	
17	20631025	-----	线托盘	Washer	8	
18	30531075	-----	橡胶垫圈	Washer	2	
19	30531077	-----	垫圈17	Washer	2	
20	30531078	-----	过线套	Spacer	10	
21	S04050	-----	十字槽凹穴六角头螺栓M5×16	Screw	5	
22	N01030	-----	套螺母M5	Nut	5	
23	21131013	-----	导线棒固定块	Slider	1	
24	20131010	-----	线盘垫	Washer	8	
25	30531074	-----	支撑板	Bland	3	
26	10113011	-----	过线圈(内圈)	Tube	10	
27	W01048	-----	平垫圈5	Washer	3	
28	201S16004	-----	螺母	Nut	12	
29	20128018	-----	线盘垫圈	Washer	8	
30	20131022	-----	棒架螺钉	Screw	1	
31	20131021	-----	棒架螺钉	Screw	3	
32	201S16006	-----	导线环螺母	Nut	6	
33	20131020	-----	导线环螺钉	Screw	6	
34	301S30020	-----	十字槽盘头自攻螺钉ST4.2×19	Screw	3	

十七、附件(3)/Accessories Assemblies



### 十七、附件(3)/Accessories Assemblies

序号 No	件号 Par No.	参考件号 Ref.Part.No	名称	Description	数量 Number	备注 Remark
1	30122029	206338	油盘减振垫	Rubber cushion	4	
2	301S16008	206336	托盘固定螺母	Nut	4	
3	301S30017	4512	托板内六角螺钉	Bolt	4	
4	20131029	KX08	大垫圈	Washer	8	
5	30122029	KX09	托板减振垫	Rubber cushion	4	
6	30103078	-----	减振垫支撑套	Spacer	4	
7	30122031	-----	减震垫圈	Rubber cushion	4	
8	30531027	-----	附件盒	Accessory Box	1	
9	30532001	VN01	JK8008安装板	Rest board	2	
10	301S30018	-----	螺钉	Screw	4	
11	130531002	-----	泡沫箱 (上)	Box	1	13053100100
12	130531003	-----	泡沫箱 (下)	Box	1	
13	130531006	-----	纸箱	Paper Box	1	

JACK 杰克

# 成套智联 让服装智造无限可能



杰克股份官方微信



杰克股份官方抖音



杰克资料库



参观杰克

400-8876-858  
[www.chinajack.com](http://www.chinajack.com)

杰克科技股份有限公司  
浙江省台州市椒江区东海大道东段1008号  
电话 :0086-576-88177788 88177789  
传真 :0086-576-88177758

JACK TECHNOLOGY CO.,LTD  
No.1008, Donghai Road East, Jiaojiang District,  
Taizhou city, Zhejiang, China  
TEL:0086-576-88177788 88177789  
FAX:0086-576-88177758